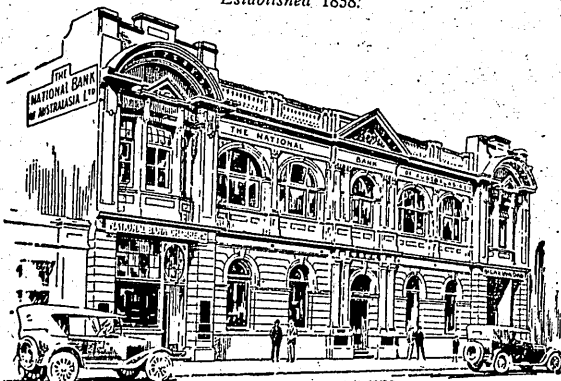


The National Bank

MSA

of Australasia Limited

Established 1858.



Perth Office.

AUTHORISED CAPITAL			
CAPITAL PAID UP			£10,000,000
RESERVE FUND ACCOUNT	£5,000,000		
EXCHANGE ADJUSTMENT RESERVE	3,000,000		
SURPLUS PROFITS CARRIED FORWARD	800,000		
	147,895		
RESERVE LIABILITY OF SHAREHOLDERS	8,447,895		
	1,800,000		

Head Office: MELBOURNE, 273-279 Collins Street.

London Office: 7 Lothbury, E.C.

£10,247,895

DIRECTORS:

Sir JAMES A. M. ELDER, K.B.E., Chairman.
 Hon. Sir FRANK CLARKE, K.B.E., M.L.C., Vice-Chairman.
 ALEX. F. BELL, O.M.G.
 Sir HENRY CHAUVEL, G.C.M.G., K.C.B.

Sir JOHN GRIOE.
 H. M. STRACHAN.
 D. YORK SYME, JNR.

Chief Manager—E. H. WREFOED.

Deputy Chief Manager—JAMES WILSON.

Inspector—F. L. GILLINGHAM.

Chief Inspector—E. J. OSBORNE.

Sub-Inspector—J. R. MACKENZIE.

Principal Office for WESTERN AUSTRALIA: 48-54 St. George's Terrace, PERTH.
 Manager: S. M. Wrefoed. Sub-Manager: H. C. Walker. Accountant: C. A. Robin.
 Manager Branch Department: John Anderson. Branch Inspector: L. G. A. Rutter.

OFFICES AND BRANCHES THROUGHOUT AUSTRALIA.

BRANCHES, AGENCIES AND RECEIVING OFFICES IN WESTERN AUSTRALIA.

ALBANY	HARVEY	NARROGIN
BAANDEE (receiving office)	KALGOORLIE	NEDLANDS (receiving office)
BASSEANDEAN (receiving office)	KARLGARIN (receiving office)	NORTHAM
BRIDGETOWN	KATANNING	NORTHAMPTON
BRUNSWICK JUNCTN (receiving office)	KELLEBERRIN	PEMBERTON (receiving office)
BUCKLAND HILL (receiving office)	KONJUP	SUBIACO
BUNBURY	KONDININ	TAMMIN
CITY MARKETS (agency)	KOORDA	THREE SPRINGS
CLAREMONT	KORRELOCKING (receiving office)	VICTORIA PARK
CORRIGIN	KUKERIN (receiving office)	WAGIN
COTTESLOE	KULIN	WAROONA (receiving office)
DALWALLINU	LEEDERVILLE (receiving office)	WEST LEEDERVILLE (receiving office)
DARKAN (agency of Williams)	LEONORA	WEST END (Sub-Branch of Perth)
DENMARK (receiving office)	MANJIMUP	WICKEPIN
DOODLAKINE (agency)	MAYLANDS (receiving office)	WILLIAMS
JOVERIN	MERREDIN	WILLIAM STREET, PERTH
JUMBLEYUNG	MINGENEW	WONGAN HILLS
PERMANTLE	MINYALE (receiving office)	WOODANALLING (receiving office)
PERMANTLE TOWN HALL (Sub-Branch)	MOORA	WYALKATCHEM
HERALDTON	MUNTADGIN (receiving office)	YEALERING (Sub-Branch)
INOWANGERUP	MURRAY STREET, PERTH	
JOOMALLING	NAREMBEEN	

Agents in all parts of Australasia, the United Kingdom, and throughout the World.
 MONIES REMITTED to all parts by DRAFTS, TELEGRAPHIC or CABLE TRANSFERS.
 LONDON AND FOREIGN BILLS PURCHASED.
 CIRCULAR and other LETTERS OF CREDIT issued, available in AUSTRALASIA and ABROAD for
 TOURING and COMMERCIAL NEEDS.
 Deposits received for fixed periods at rates of interest to be ascertained on application.
 ALL GENERAL BANKING BUSINESS CONDUCTED.