

GROUP 121, Northcliffe.—
Rail to Pemberton, th 20 miles by motor

Bashford Jas, frmr
Bates Wm John, frmr
Conlon Alfd, frmr
Daubney James, frmr
Flanagan James, frmr
Inchley Wm Jno, frmr
Johns Alfred, hd tchr
Leverson Fred, frmr
Loverock Geo, frmr
Loverock Jno frmr
Rogerson James, frmr
State School (Alfred Johns, hd tchr)

GROUP 122, Cowaranup.—
Rail to Cowaranup, th 12 miles C. Postal add, via Great Hope Valley

Adsetts G frmr
Baker Laurence, frmr
Barclay Jno, frmr
Caddell Georj, frmr
Fripp E F frmr
Fletcher Bertie F W, frmr
Gill L foreman
Harrison J P frmr
Hough E frmr
Kemp J frmr
King A E frmr
Neal Wlfr, Jno, frmr
Newland W H E, frmr
McCleary T frmr
Mountford S frmr
Neal W A frmr
Neal W J frmr
Radford John Leslie, frmr
State School (S Vincent, hd tchr)
Vincent S, hd tchr
Westwood A frmr

GROUP 123, Northcliffe.—
Rail to Pemberton, th 30 miles by motor

Beamish G H frmr
Bradley A frmr
Curtis Thos P, frmr
Hilson C, hd tchr
Hills N E frmr
Goodall G T A frmr
Jones A R frmr
Kerry J W frmr
Pember Kenneth F M, frmr
Roberts Chas L, frmr
State School (C Hilson, hd tchr)
Webster H frmr
Warner Geo Fredk, frmr
Webster Thos E, frmr

GROUP 124, Busselton.—
Rail to Busselton, th 10 miles to Group. Postal add, via Chapman's Hill

Clark Geo, frmr
Clinkr Joseph Thos, frmr
Clematis A R frmr
Glassby Arth, frmr
Hill J F frmr
Hilson C, hd tchr
Hollands Ernst, frmr
Hughes W frmr
Jones S frmr
Ross James Alexander, frmr
Shelton Geo T E, frmr
Siddons F, frmr
Siddons F G frmr
Spence Thos, frmr
State School (Chas Hilson, hd tchr)
Ward F J frmr

GROUP 125 (Maramanup)
Peel Estate.—Rl to Janalok, th 18 miles by motor.

Brown Benj, frmr
Coldcott Frnk, frmr
Dunstan Fredk Jas, frmr
Dunstan James H, frmr
Fitzpatrick Michael J, frmr
Hoskin Richd Wm, frmr
Kendall Arth, frmr
Knight H H frmr
Livingstone Arth E, frmr
Lynch Wm, frmr
McCabe Thos, member foreman & frmr
Madalena Peter D, frmr
Nicolli Giounio, frmr
Whitbread Henry J, frmr

GROUP 126, Hester.—
Rail to Hester, th 3 miles by motor

Cowley Jno, hd tchr
Dilkes E R frmr
Dilkes Ernest Wm, frmr
Hoad Fredk W, frmr
Kendall Harold E, frmr
McClune J frmr
More S E frmr
Phelps Frnk, frmr
State School (John Cowley, hd tchr)
Shugar Arthur Geo frmr
White F frmr
Wilkinson Chas Thos, frmr

GROUP 127, Hester.—
Rail to Hester, th 3 miles by motor

Cowley Jno, hd tchr
Crombie J J frmr

Dyke N F frmr
Hosmer Albt R, frmr
Long Wm Jesse, frmr
Lowe Thos
Melbourne Wm Jas, frmr
Palmer Percy F, frmr
Richardson R frmr
State School (John Cowley, hd tchr)
Wilson Albert, frmr
Wilson P frmr
Wiseman Fredk Cyril, frmr

GROUP 128, Nelson.—
Rail to Pemberton, then 20 miles to Northcliffe

Boaman James Ernest, frmr
Bradbury G frmr
Carter Wm Hy frmr
Foggon Wm, frmr
Francis Fredk Arth, frmr
Hutchins Wm, frmr
Lamb Jno, frmr
Mackenzie Geo, frmr
Thomson Jas Stuart, frmr
Vaughan J O frmr

GROUP 131, Nelson.—
Rail to Greenbushes

Cornell Herbert Wm, frmr
Crawford Jos Wm, frmr
Davis Geo Saul, frmr
Heywood Fred H, frmr
Holmes Jno Vincent, frmr
Long Robt Ernst, frmr
Minnings Herbert Cyril, frmr
Osborne W frmr
Reynolds Jno Albt, frmr
Skerry Wm, frmr

GROUP 132, Nelson.—
Rail to Greenbushes

Blunsden A J frmr
Delaney Jno Andw, frmr
Elliot Reuben Francis, frmr
Flison Sydney Jno, frmr
Hayward A frmr
Hinchcliffe Frank, frmr
Jeffrey Jno Sutton, frmr
Laurie James Cambell, frmr
Lindsay Andw, frmr
Long A J frmr
Towes O T frmr

GROUP 133, Northcliffe.—
Portion of 121 rail to Pemberton, then 26 miles by motor

Black J M frmr
Gillespie J frmr
Jackson G frmr
Jackson G Junr frmr
McEachran D J frmr
McGougan J M frmr

McGowan W frmr
McPherson N O frmr
McPherson W frmr
Murno J frmr
Scaally A frmr
McPherson P frmr
Jackson G frmr

GROUP 134, Nelson.—
Rail to Pemberton, then 20 m

Collins Albert Ed, frmr
Hayter Jos, frmr
Line Alf Wm, frmr
Playfair Sydney, frmr
Shaw Geo Crombie, frmr

GROUP 135, Nelson.—
Rail to Manjimup

Hulecup W J junr frmr
Geddie H L frmr
Laycock G E O frmr
Podd N frmr
Thompson J frmr
Hulecup Walt Jas, frmr
Rooney C, hd tchr
State School (C Rooney, hd tchr)

GROUP 136 (Sussex).

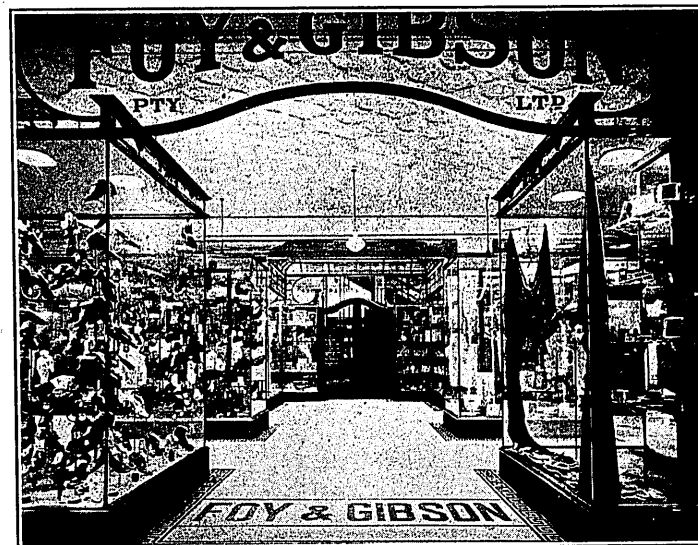
Gruden L G frmr
Curtis L O frmr
Dave B frmr
Diment M frmr
Earnshaw E frmr
Fraser F frmr
Nenson C W frmr
Holden P W frmr
Johnson W J frmr
Moynan J frmr
King E J frmr
Lunn E P frmr
McJova J J frmr
Rogers J frmr
Scott T W frmr
Wood P W frmr

GROUP 137, Margaret River.
Rail to Busselton, 147 m.

Wheatley Reginald A frmr
Mosely Charles A frmr
Woodward John H frmr
Stanley Herb James frmr
Roberts Roderick P frmr
Anderson Alfred frmr
Phillips William frmr
Fisher R W M frmr
Todd T frmr
Allison G E frmr
Bennett J frmr

FOY & GIBSON, PTY., LTD.

Universal Providers



General Importers, Drapers, Outfitters and Manufacturers
OF THE FAMOUS

"GIBSONIA" TEXTILES, HOSIERY AND UNDERWEAR.

Every essential need for every purpose, and for every occasion is readily procurable at this store (a complete self-contained shopping institution), and at Perth's lowest prices consistent with the high quality and standard maintained. :: :: ::

Hay Street and St. George's Terrace,
PERTH.