

**GROUP 118, Northcliffe.**—

Rail to Pemberton, th 25 miles by motor  
 Betworth Thomas, frmr  
 Bezzant Fredk Chas, frmr  
 Brown John, frmr  
 Culverhouse Chas E, frmr  
 Cunningham Malcolm, frmr  
 Crouch Thos Robt, frmr  
 Featherstone Ernst Art, frmr  
 Garry Thomas, frmr  
 George Hy Lewis, frmr  
 Hearn Albert S, frmr  
 Heley James W, frmr  
 Hillier Claude D, frmr  
 Hillier Geo Hy, frmr  
 Macdonald John, frmr  
 Macdonald Malcolm, frmr  
 Miles Christopher, frmr  
 Mount Harry, frmr  
 Rolfe Albert Ed, frmr  
 Rolfe Albt E, frmr  
 Shenton Leslie Chas, frmr  
 Swain John, frmr  
 Tracy Wm Geo, frmr  
 Watson Fergus Jno, frmr

**GROUP 119, Quininnup.**—

Rail to Jardee, th 20 m by motor  
 Buss Geo Stan, frmr  
 English Thos Hy, frmr  
 Humphrey Morton A, frmr  
 Irwin Bertie, frmr  
 Pease Mashill, frmr  
 Ray Ernst, frmr  
 Redden Blch F, frmr  
 Rooney C, hd tchr  
 Spoor James, frmr  
 State School (C Rooney, hd tchr)  
 Styles Henry D, frmr  
 Turville Percy G J, frmr  
 Williams Frncs E S, frmr

**GROUP 120, Quininnup.**—

Northcliffe.—Rail to Pemberton, th 27 miles by motor  
 Crawford Chrstpr P, frmr  
 Freed Alfd S D, frmr  
 Gardner Wm, frmr  
 Graham R, hd tchr  
 Jobson Thos Geo, frmr  
 Lunn Arthur, frmr  
 Magee Samuel S, frmr  
 Percy Charles Alfred, frmr  
 Rudd Geo F, frmr  
 Smith Durham S, frmr  
 State School (R Graham, hd tchr)  
 Thornett F, foreman & frmr

**GROUP 121, Northcliffe.**—

Rail to Pemberton, th 26 miles by motor  
 Bashford Jas, frmr  
 Bates Wm John, frmr  
 Conlon Alfd, frmr  
 Daubney James, frmr  
 Flanagan James, frmr  
 Inchley Wm Jno, frmr  
 Johns Alfred, hd tchr  
 Leverton Fred, frmr

Loverock Geo, frmr  
 Nelson Chas Albert, frmr  
 Roseason James, frmr  
 State School (Alfred Johns, hd tchr)  
 Whilpp Fred, frmr  
 Whilpp Joseph Hy, frmr

**GROUP 122, Cowaranup.**—

Rail to Cowaranup, th 12 miles. C. Postal add, via Great Hope Valley  
 Addeatts Jno Wm, frmr  
 Addeatts John Wm, frmr  
 Baker Laurence, frmr  
 Barclay Jno, frmr  
 Brenton Albert Hy, frmr  
 Caddell George, frmr  
 Darby Wm Robt, frmr  
 Ede Thos, frmr  
 Fletcher Bertie F W, frmr  
 Hodgins Ernst, frmr  
 Louder Richmond R T, frmr  
 Mackey Patrick A, frmr  
 Neal Wlr, Jno, frmr  
 Nowland W H E, frmr  
 Poppevell Jos, frmr  
 Price Thos, frmr  
 Radford John Leslie, frmr  
 Rice Geo Arth, frmr  
 State School (S Vincent, hd tchr)  
 Vincent S, hd tchr

**GROUP 123, Northcliffe.**—

Rail to Pemberton, th 30 miles by motor  
 Cook Henry Albert, frmr  
 Curtis Thos F, frmr  
 Hilson C, hd tchr  
 Hoffman Albt, frmr  
 Pember Kenneth F M, frmr  
 Roberts Chas L, frmr  
 State School (C Hilson, hd tchr)  
 Sturdy Chas, frmr  
 Warner Geo Fredk, frmr  
 Webster Thos E, frmr

**GROUP 124, Busselton.**—

Rail to Busselton, th 10 miles to Group. Postal add, via Chapman's Hill  
 Broad Ashley Thos, frmr  
 Clark Geo, frmr  
 Clark Joseph Thos, frmr  
 Eltham Albert, frmr  
 Glassby Arth, frmr  
 Hendren Wm, member foreman & frmr  
 Hilson C, hd tchr  
 Hollands Ernst, frmr  
 Ross James Alexander, frmr  
 Saxe Fredk Geo, frmr  
 Shelton Geo T E, frmr  
 Southcombe Wm Hy, frmr  
 Spence Thos, frmr  
 State School (Chas Hilson, hd tchr)  
 Sterne Faudel P, frmr  
 Thomson Alexander, frmr  
 Wilby Clarence A, frmr

**GROUP 125, Peel Estate.**—

Rail to Jandikot, th 18 miles by motor  
 Brown Benj, frmr  
 Coldcott Frnk, frmr  
 Dunno Denis, frmr  
 Dunstan Fredk Jas, frmr  
 Dunstan James H, frmr  
 Fitzpatrick Michael J, frmr  
 Hoskin Richd Wm, frmr  
 Kendall Arth, frmr  
 Livingstone Arth E, frmr  
 Lynch Wm, frmr  
 McCabe Thos, member foreman & frmr  
 Madlons Peter D, frmr  
 Nicol Glounio, frmr  
 Whitbread Henry J, frmr

**GROUP 126, Hester.**—

Rail to Hester, th 3 miles by motor  
 Clarke Harry, frmr  
 Cowley Jno, hd tchr  
 Dilks Ernest Wm, frmr  
 Head Fredk W, frmr  
 Kendall Harold E, frmr  
 McCleary Thos, frmr  
 Murphy Thos, member foreman & frmr  
 Phelps Frnk, frmr  
 Pizzay John, frmr  
 State School (John Cowley, hd tchr)  
 Sugar Arth Geo, frmr  
 Treadgold Samuel R, frmr  
 Wilkinson Chas Thos, frmr

**GROUP 127, Hester.**—

Rail to Hester, th 3 miles by motor  
 Cowley Jno, hd tchr  
 Crombe John, frmr  
 Hosmer Albt B, frmr  
 Long Wm Jesse, frmr  
 Lowe Thos  
 Melbourne Wm Jas, frmr  
 Newcombe Sidney, frmr  
 Palmer Percy F, frmr  
 Parker Barry, member frmr & frmr  
 Smith John Hy, frmr  
 State School (John Cowley, hd tchr)  
 Wilson Albert, frmr  
 Wiseman Fredk Cyril, frmr

**GROUP 128, Nelson.**—

Rail to Pemberton, then 20 miles to Northcliffe  
 Beaman James Ernest, frmr  
 Emons Jos Jno, frmr  
 Finch Frederick Wm  
 Foggon Wm, frmr  
 Francis Fredk Arth, frmr  
 Hutchins Wm, frmr  
 Lamb Jno, frmr  
 Mackenzie Geo, frmr  
 Thomson Jas Stuart, frmr  
**GROUP 129, Nelson.**—Rail to Pemberton, then 20 miles to Northcliffe  
 Gardner Edw S, frmr  
 Hastings Albt, frmr  
 Hazelgrove Albt Ernst, frmr  
 Jardine Andw, frmr  
 McRitchie Finlay, frmr  
 O'Brien Thos, frmr

Robinson Geo Edw, frmr  
 Skipper Wm Arth, frmr  
 Townsin Albt Wm, frmr

**GROUP 130, Nelson.**—

Rail to Pemberton, then 20 miles to Northcliffe  
 Akohurst Arth, frmr  
 Brams Chas Alfd E, frmr  
 Edwards Jno, frmr  
 Haynes William, frmr  
 Hog Robt Geo, frmr  
 Longson Thos, frmr  
 Stone Fred, frmr  
 Williams Alfd Geo, frmr

**GROUP 131, Nelson.**—

Rail to Greenbushes  
 Cornell Herbert Wm, frmr  
 Crawford Jos Wm, frmr  
 Davis Geo Saml, frmr  
 Durban Frank, frmr  
 Heywood Fred E, frmr  
 Holmes Jno Vincent, frmr  
 Long Robt Ernest, frmr  
 Mimmings Herbert Cyril, frmr  
 Reynolds Jno Albt, frmr  
 Skerry Wm, frmr  
 Triplett Wm Erth, frmr

**GROUP 132, Nelson.**—

Rail to Greenbushes  
 Arnott Jas, frmr  
 Delaney Jno Andw, frmr  
 Elliot Reuben Francis, frmr  
 Fison Sydney Jno, frmr  
 Flockart Jas, frmr  
 Harmse Jack Daniel J, frmr  
 Hinchellie Frank, frmr  
 Jeffrey Jno Sutton, frmr  
 Laurie James Cambell, frmr  
 Lindsay Andw, frmr  
 Oswald Ernest, frmr

**GROUP 133, Northcliffe.**—

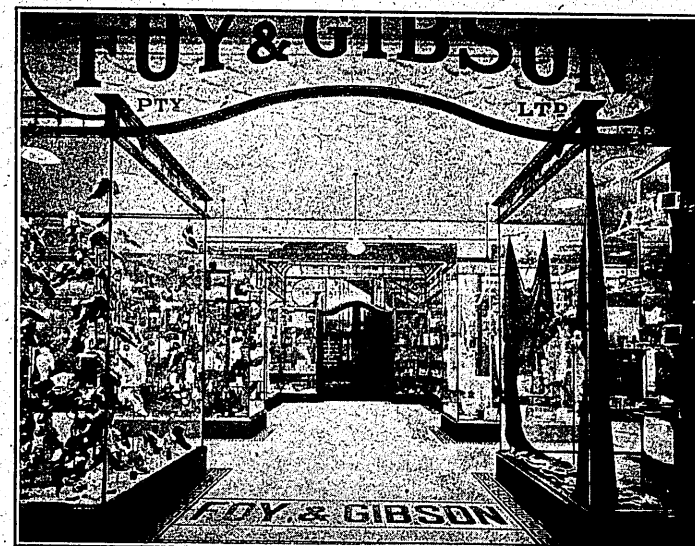
Portion of 121 rail to Pemberton, then 26 miles by motor  
**GROUP 134, Nelson.**—Rail to Pemberton, then 20 m  
 Collins Albert Ed, frmr  
 Collins Albert Hy, frmr  
 Cyster Jos, frmr  
 Line Alf Wm, frmr  
 Lovejoy Stanley Munro, frmr  
 Playfair Sydney, frmr  
 Shaw Geo Crombie, frmr  
 Smith Harry, frmr  
 Vizard Chas Geo, frmr  
 Yardley Geo, frmr

**GROUP 135, Nelson.**—

Rail to Manjimup  
 Bott Claude Chas F, frmr  
 Copp Edw, frmr  
 Goldsmith Reginald, frmr  
 Howe Hidley Fred, frmr  
 Hulcup Wait Jas, frmr  
 Rooney C, hd tchr  
 Sewley Jasper J, frmr  
 State School (C Rooney, hd tchr)  
 Williams Francis Ed, frmr

# FOY & GIBSON, PTY., LTD.

## Universal Providers.



General Importers, Drapers, Outfitters and Manufacturers  
 OF THE FAMOUS  
 "GIBSONIA" TEXTILES, HOSIERY AND UNDERWEAR.

Every essential need for every purpose, and for every occasion is readily procurable at this store (a complete self-contained shopping institution), and at Perth's lowest prices consistent with the high quality and standard maintained. :: :: ::

Hay Street and St. George's Terrace,  
**PERTH.**