

Under Royal

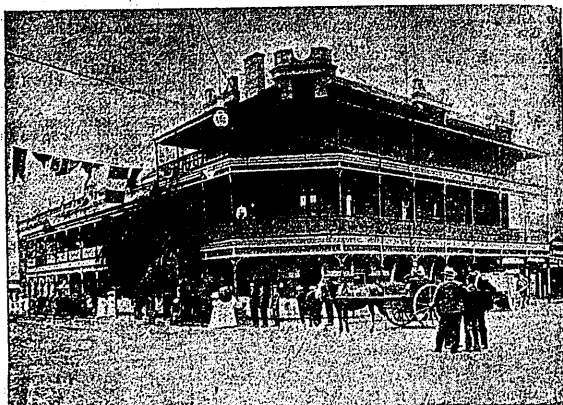


Patronage.

ROSE HOTEL, BUNBURY

Situated within one minute's walk of the Railway Station, close to Sea, and in the very centre of the Town.

FIRST-CLASS CUISINE.



Excellent Sanitary Arrangements.
Sample Rooms.

Families and Gentlemen staying at the **Rose Hotel** may rely upon finding all the comfort and attention of a first-class hotel at reasonable rates.

Excellent Boating, Fishing and Shooting close at hand.

Fine Billiard Saloon.

L. ILLINGWORTH, Prop'r.

Telephone 7.

Through Connection to Perth.

Ede, Wm E, timekpr, Great Bldr mine
Elliott, Jno, Bldr No 1 lse
Elliott, Mrs E, bdgise, Bldr No 1 lse
Engren, Wm, Lake View and Boulder lse, Boulder
Evans, A Ern, bkpr, Great Bldr G M Ltd, Bldr
Falconbridge Witr T, Kalg, Cons lse
Fimiston Police Stn (Wm A Bass, const in chg)
Fimiston Post Office (P Sutcliffe, pm)
Fitzgerald, Patk, mer restst, Oroya Links Ltd, Bldr
Ford Jno H (strum), Horseshoe mine
Ford Mrs M J, Lake View, Bldr Gemo lse
Fraser, Alex, metallurgist Gt Bldr Mine, Bldr
Fraser, Hugh, Fimiston Htl, Bldr Bk
Fuller, Arnold, E Kalg
Gabcich Anty, Bldr lse
Gannaway, Mrs Char, Barton st, E Kalg
Gellard, Geo, Plumer st, E Kalg
Gellard, Herb, Plumer st, E Kalg
Glanini Lodovics, Hidden Secret lse
Gibson Geo, Bldr lse
Gilbert Sydney L, Milton st
Godfrey, Percy, Barton st, E Kalg
Golden Horse Shoe Estates Co Ltd (J W Sutherland, mgr)
Goyder, Frank, Associated Nrhin gold mine
Great Bldr Persey GM Co Ltd (Ernest Williams, mgr)
Great Boulder Prop G M Ltd (Richard Hamilton, mgr)
Greenham, Richd C, Powell st
Greenhill T M, Trib frmn, Oroya Links lse, Bldr
Greenhill, Thos W, under-

ground mgr, Oroya Links
Greep, Mrs Wm, Plumer st, E Kalg
Gregson Ernest, Kalg Cons lse
Grusch Mut, Bldr lse
Greep, Thos, Plumer st, East Kalg
Greep, Wm, Barton st, E Kalg
Griffiths, Mrs, Golden Horseshoe mess camp
Growth, Geo, nast undrgnd mgr, Golden Horseshoe GM Ltd
Hamilton, Richd, gen mgr Gt Bldr Propy G M Co Ltd
Hannan's Reward Bitty, E Kalg (Hunt Bros, pprs)
Healey, Wm J, tribute foremn, Assoc Nrhin Bks
Helms, Mrs A, Good Luck lse
Helmz Fredk, Kalg Cons lse
Henderson A, Bldr Hotel
Hinchcliffe Chas A, Barton st, E Kalg
Hughes Josh F, Croesus lse
Hughes, Rex, clthr, Bldr Bk Hunt Bros, Bitty owners, E Kalg
Hunt, Chas, Hannan's Reward lse, E Kalg
Hunt, Geo, Hannan's Reward lse, E Kalg
Hunt, Mrs E J, nurse, Eclipse lse, Bldr
Hunt, Wm, Hannan's Reward lse, E Kalg
Hunt, Wm H, Eclipse lse, Bldr
Hunt, Wm Jas, Eclipse lse
Ingram Wm H, Lake View & Bldr Jctn lse
Jackman Ed Wm, Powell st
Jakisch Chris, Bldr West lse
James, Alf J, Bldr Bk rd
James, R T, Assoc lse
Jefferies Wm T, Hainault rd
Jeffrey, Wm, Golden Pike lse
Jerovich Vincent, Bldr Wst lse
Johns, Thos M W, Gt Bldr lse, Bldr

Jones, Alan, Lake V & Bldr Junc lse
Jones, John, Powell st, Bldr
Jones, Miss M, bdg lse, W Bldr lse
Jukes, Jas Y, acct Assoc mine, Emstn, Bldr
Kamelch Luka, Bldr West lense
King, Jno E, Powell st, Bldr
Kilnase Tony, Bldr lse
Kalgth, Fred, Assoc Nrhin lse
Korunich Frank, Kalg, Cons lse
Lane Rubin, Milton st
Langland Jas Ed, Launceston st
Lauri, Geo M, assy, Persev G M Boulder
Law, Ben, groom, Gt Bldr lse, Bldr
Law, Harry, electn Gt Bldr Propy mine
Law, Andw, stre, Oroya Lks G M Bldr
Lawrence, Mrs A, grer, Bldr Bk
Leslie, Mrs H, Gt Bldr lse
Levl, Witr, bkslrr, Bldr Bk Liddcot, Wm, Powell st, Bldr
Linklater, Hugh, frmn fitter, Golden Horseshoe G M, Bldr Gate
Little, Robt, Jbles lse, Gldn Gate
Love, Fred, Wt Bldr lse
Love, Jno G, Gldn Pike lse, Boulder
Lugg, Mrs C, Bldr Pers lse
Lynch, Tim, Havelock st
Lynch, Wm E, Maritana Hill, E Kalg
Lyons, Mrs M, Golden Gate
McAulay, Duncan F, mgr
McAulay G M of W A Ltd, Frinst, Bldr
McCallum, Jas G, Assoc mine
McCook, Jas, Powell st, Bldr

McCook, John, Powell st, Bldr
McClow, Alec G, engrr Golden Horseshoe lse, Bldr
McGrath, Jas, Hidden Secret lse
E Kalg
McInerney, Robt P, timekpr, S Kalg Con GM Ltd
McIvor, Arth A, Barton st, E Kalg
McKenzie, Dvd, Under-grnd mgr, Sth Kalg Consuls
Mackie, Horace, Golden Hreeshoe mine
McLeod Alec, Ivan's lse
Macmillan Mrs E
Macnamara, Miss C E, W Boulder lse, Boulder
Macnamara, Frnk, Gldn Pike lse
Maddern Wm H, Bldr West lse
Maddox Geo, Kalg Cons lse
Mann, Edw H, Wt Bldr lse
Marelich, Robt, W Bldr lse, Boulder
Martin, Hy, Oroya N lse, Bldr
Martin Thos, Kalg Cons lse
Mason, Mrs A E, Ironsides lse
Match Mark, Melton st
Matulich, Antoni, Launceston st, Boulder E
Matkovich, Steve, Kalg Consuls lse
Mathews Mrs Martha, Milton st
May, Fredk, LV & Bldr Junc lse
Maxwell Joe, Bldr lse
Maxwell Josh, store, Gt Bldr Mine
Meyers, Mrs Annie, Lake View & Star lse
Menihane, Mrs C, Croesus Sth lse
Meredith, Cyril, Assoc GM Ltd
Miller, Mrs E A, Launceston st

Funds
£22,630,000.

THE NATIONAL MUTUAL LIFE ASSN.

Annual Income
£4,280,000.

THE MOST PROGRESSIVE AUSTRALIAN OFFICE

WESTERN AUSTRALIA TOWNS DIRECTORY.

BOY 189

Mitchell, Jas H, W Bldr lse, Boulder
Molan, Jno, Gt Bldr lse
Moore, Hy L, surr, Kalg GM
Moratit, Mrs D, Bldr Nth lse
Moriarty, J, Gt Bldr lse
Morley Thos E, Ironsides lse
Morton, Thos, West Bldr lse
Moyle, Mrs E J, Hainault rd, Bldr
Mundie, Edw, surr, S Kalg Con GM Ltd
Munro, Wm M, undrground mgr, Assoc G M, Boulder
Murray, Jas, engr, Kalg GM
Murray, Ylrgntus H, undrgnd mgr, Gldn Horseshoe GM Ltd
Nagel, Albt C, battery formn, Horseshoe mine, Bldr
Naylor, Mrs M, Paringa lse, Golden Gate
Nelson Albt Chas, Lake View & Boulder lse
Nelson, Alf, Lake View & Bldr Junc lse
Newton, Mrs J, Barton st, E Kalg
Newton, Wm, Plumer st, E Kalg
Nicholls, Fred, W Bldr lse
Nicholls, Jno, Bldr W lse, Bldr
Nicholson, Alf, electn, Sth Kalg Con GM Ltd
Noble, Phillip, Lake View & Bldr Junc lse
Norris, Wm, Barton st, E Kalg
Oates, Edw E, hairdr & tob, Boulder Block
O'Connor, Jos, Oroya Links
O'Hanlon, Jas K, Wt Bldr lse
Olds, Jas, Hainault lease
O'Shannon Frank, Bldr lse
Opperman Mrs E, Overland Htl, Est Kalg
Paddick, Robt H, Persvnce GM
Parentich Martin, Launceston st
Pasley, Mrs E, Maritana Hill E Kalg
Paton, Adolph, metallurgist Oroya Links
Patterson, Jas, True Blue lse
Patterson, Jas W, Bldr lse
Pascoe, Jas H, Mt Charlotte lse
Perry, Jno, Lake View and Bldr Jctn lse, Bldr
Perry, Wm, undrg mgr, Perseverance GM
Pettit, Robt, Golden Pike lse
Pineich, Mick W, Bldr lse
Poole, Jos, Wt Bldr lse
Powell, Jno, stkr, Powell at Pritchard, Hy, Paringa lse, Bldr
Public Hall, Plumer st, E Kalg
Rains, Chas, Bldr lse
Slater, Robt L, Bldr No 1 lse
Ray, Ernst A, Barton st, E Kalg
Read, Wm J, Plumer st, E Kalg
Reed, Jas S, frmn fitter, Ivanhoe GM Ltd
Richards, Wm R, acct, West Bldr lse, Boulder
Richards, Syd, Great Bldr lse
Roberts, John, Oroya E lse
Roberts, Geo M, gen mgr lse
Nrhin Bks W A L, Bldr
Robertson Mrs S, Plumer at Rogers Jno, Est Kalg
Rohi, Iran, Wt Bldr lse
Roslman, Edw C, acct, Ivanhoe GM
Rove Archilaus J, Barton st, E Kalg
Rudwick, Geo, storekpr, Assoc GM Ltd
Sallur, Mrs Mary, Launceston st
Santich Jno, Bldr West lse
Saunders, Jos A, Lyon at Bldr E

Schellenberger, Herb L, mill engr, Gt Bldr m, Bldr lse, Br
Schorl, Thos, engr, Hidden Secret lse
Schrnean Frank, Bldr lse
Scott, Robt, Gt Bldr lse
Scott, Thos, Gt Bldr lse
Sharpe, Wm Bldr Nth Extnd lse
Shaw, Edw W, engr, Oroya Links, Bldr
Shaw Colln C, Ivanhoe lse
Smith, Frncs, Maritana Hill, East Kalg
Smith, Geo S, W Bldr lse
Smith, Thos, engr
Smith, Geo Thos, Mt Bldr lse
Smytho Jas, Assoc lse
Spence Jno, Milton st
Sprljan Frank, Bldr Nth Extnd lse
Stace, Harry, Brookman Bldr lse
Stacey Richd, True Blue lse, Boulder
Stanton, Hy D, electn, Golden Horseshoe GM
State School, E Kalg (E M G Plangin, hd teach)
Standman, Fredk J, Nrhin Assoc lse
Stephens' Alf, Barton st, E Kalg
Stevens, Thos B, consulting metallurgist, Lake View Con, Boulder
Stone, Saml, Nth Assoc lse
Sutcliffe, Percy, pstmstr, Flmiston
Sutherland, J W, mgr Gldn Horseshoe G m, Bldr
Sutherland, Miss E, Golden Horseshoe lse
Sutherland, Miss J, Golden Horseshoe lse
Teede, Sidney, acct, Gt Bldr mine, Boulder
Thompson, Harold R, Barton st, E Kalg
Thompson Robt H, Brown Hill lse
Tonkin, S, storekpr, Golden Horseshoe G M Ltd
Tru Laundry, Bldr Bk
Trench Ivan, West Bldr lse
Toy, Frank, Eclipse lse, Bldr
Turrell Saml G, assayer, Bldr Bk
Turrell, Wm, Royal Mint lse
Uren, Albt, W Bldr lease
Ulrich, Maty, W Bldr lse, Boulder
Vass, Wm A, const, Fimiston
Vernon, Thos, Kalg Consuls lse
Walker, Chas E, engr, Great Bldr Pty G M, Bldr
Walker, Wm, assayer, Bldr Bk
Walker Wm, ppr Blatchford & Gt Bldr Bk
Wallace, Mrs E, bdgise, Fimiston rd, Bldr
Walsh Ed Hannan's lse
Ward, Wm Geo, John Forrest lse
Warrick, Jno, undgd mgr, Gt Bldr mine, Gt Bldr lse
Watson, Abt, fitter, Bldr Pers G M Ltd
Watson A E, timekpr, Golden Horseshoe G M Ltd
Wearne Clement J, Wst Bldr lse
Weedon, Percy H, Plumer st, E Kalg
Williams Dvd, Golden Horseshoe lse
Williams Ern, mgr Bldr Pers G M Co Ltd
Williams, Miss M E, confr, Bldr Bk
Winter, Michl, Croesus lse
Wood, Frank, acct, S Kalg Con G M Ltd
Yates Mrs Emma B, Nivlan st
Youden, Henry, True Blue lse

Yurlich Ivan, Wst Bldr lse
Zaopantick Ivan, Bldr Nth Extnd lse
Zurich Ivan Bldr lse

Boulder Block, see Boulder

BOUNDARY SIDING.

Williams River dist. 171 m S from Perth by rail

Bates, Jno A, farmer
Bedwell Alex W, frmr
Boothby, Edw, farmer
Boothby, Fred, farmer
Boothley, Jos, farmer
Borgas, Chas, frmr
Borthwick Jos, frmr
Collard Chas, frmr
Danning, Thos, farmer
Fiffo, Jno, farmer
Fraser Robt, frmr
Gillingham Arth, frmr
Gillingham, Chas, farmer
Godden, Victor, frmr
Hallist, Thos M, farmer
Hammng, Leonard, frmr
Haycock & Dowling, frms
Ingram, Wlr, farmer
Jamieson Rodk, frmr
Job Herb, frmr
Lock, Wlr, farmer
Marshall Wm P, frmr
Porter Richd, frmr
Sharp Harry, frmr
Sharp Jack, frmr
Rowe, Jno, farmer
Rundie, Harry, farmer
Smith, Hy, frmr
Stewart Dvd, frmr
Thornley, Harry S, farmer
Whittaker, Wlr, frmr
Bountiful, see Broad Arrow

Bowes Est, see Northampton & Geraldton

BOWGADA, 257 m N fr Perth by rail. See also Koolanooka, Perenjori and Mingenew
Andrews F, frmr
Barratt & Marks, frms
Bowgada Pastoral Co, Bowgada Stn
Campbell Colln, frmr
Campbell J Wm, frmr
Campbell Jas, frmr
Chomley A C, frmr
Chomley F, stkrp & pm
Currell T H, frmr
Dorrington J, frmr
Gillmore Jas, frmr
Knight Fredk W, mgr Bowgada Stn
MacFadgog R, frmr
Marshall G C, grzr
Metcalfe F, frmr
O'Dea Mrs, frmr
Oilver Alfd, frmr
Payne A, frmr
Payne W B, frmr
Peerson Wm B, frmr
Saint E, frmr
Simpson & Whitley, frms
Simpson W (S & Whitley)
Stalton C R, frmr
Walker Leah, frmr
Walsh D, frmr
Wardrop Robt, frmr
Webb Eric, frmr
Whitley Wm J (Simpson & Whitley)

Bow River, see Kent River
Boya, see Darlington.
Boyaup, see Cranbrook
Boyardine, 15 m from Beverley, which see.
Boyagarra, see Brookton.
Boyanning, see Katanning.

BOYANUP, 122 m S W fr Pth by rl. Tel, MO & SB

Back, Andrew G C
Back, Aubrey, farmer
Back, Henry W, slpr hwr
Back, Thonas, farmer
Boucaut, Parker
Brooks, Chas, farmer
Brown, Edwd
Brown, Harold
Brown, Robt E
Bryce, Arthur
Bryce, Jas, farmer
Bryce, Thos
Clifton, Mrs C, farmer
Colhan, Jno, per way
Combs F, Rly htl
Cone, Harold J, stre
Copley Chas, stn mstr
Duce, Basli, frmr
Duce, Gordon, farmer
Duce, John, vin grwr
Echstone, Jas H, farmer
Eccleston, Robt H, farmer
Eccleston, Wm J, frt grwr
Elliott, J, farmer
Emmett, C, painter
Emmett, Howard, farmer
Emmett, Mrs C, senr
Evans, Hy, per way
Fowler, Thos
Galnet, Esth E C, pstmstr
Galnet, Fredk C
Garbutt, Edwd, farmer
Gardner, Fredk
Harris, Geo
Hubert, A
Hurst, A, farmer
Hurst, G E, orchardist
Hurst, Jas H, orchardist
Hurst, Jno T, orchardist
Hurst Mrs C, pstmstr
Hurst, Mrs E A
Hurst, Wm, farmer
Jarman Herb S, tchr
Jilley Westgarth, farmer
Kent, G J, per way
Kessell, Alfd W
Kilpatrick, Edw G
Kilpatrick, S, farmer
Lovelie, Ivor
Lovelie, Ivor
MacFarlane, Mrs
MacFarlane, Wm, frmr
Mahlberg, Mrs
Moore, Newton, per way
Page, Wm, farmer
Palmer, Richd, farmer
Parish Bros, farmers
Parish, C B P, farmer
Parish, E H, farmer
Payne, A J, stkrp
Payne, Raymond, frt grwr
Peak, Alfd, carpenter
Peak, Mrs E
Penny, W J
Penny, W J, orchdnt
Reilly, Tance, bknth
Rose, Alice, farmer
Scott, D M, farmer
Scott, Jas L, farmer
Scott, Mrs
Sellar, Mrs J E
Simmons, George, farmer
Simmons, C B, farmer
Simmons, Jno, farmer
Simmons, Mrs
Simmons, Thos, jun, frmr
Shehan, Thos, farmer
Slaughter, J, per way
Smith, Mrs, senr
Smith, Mrs, junr
Smith, W H, jun, farmer
Stephens, J T
Taylor, Chas, farmer
Townsend, Saml, asst stn mstr
Trainer Bros, farmers
Trigwell, Annie E, orchdnt
Trigwell, Wm, farmer
Webb Roy Loug (Eng)
Weir, A, per way
Wells, Jas, per way
Willkinson, Thos J, farmer
Williams, Henry, farmer
Wood, Alfd J, farmer