

Commercial Hotel

C.T.A. House

A. O. RIPPON, Proprietor

Phone 22

Gaston & King, Nil Desp G M
Gaston, Wlfr, mng'r mgr
Hanks, Wlfr, leaseholder
Herbert, Fredk, prspr
Laidlaw, Archib, prspr
Mclntyre, Jno, leaseholder
Morrillith, Fred, stn hnd
Probert, Arth, prspr
Prospectors' Leaseholders' Assoc
Richards, H, prospector
Ruddick, Jno, prspr
Sangster Laura, Elk Sw'n htl
Schneckenberg, Jno, minor
Scott, C W, mining engr
Smith, Wm H, leaseholder
Sproull, Rlchd, minor
State Battery
Burwood, see Northam
Bush Landing. Rail to Mundijong, thence 30 m.

BUSSELTON, Sussex
dist, 149 m S fr Perth
by rl or stmr; bks "WA & C" & "S"
News, Tel, MO & SB.
Pop. 736

Abbey, Albert
Abbey, C J
Abbey, Jno, farmer
Abbey, N I, farmer
Alexander, C mgr Cavo Ise
Anderson, Alfd, carpnr
Andrews, Chas B, bkr & conf'r
Andrews, Mrs A E, grocer
Armstrong, A J
Armstrong, E
Armstrong, Jas W, farmer
Armstrong, Leslie
Aspley W G L, bkmsht
Atkinson, J Hy, mason
Avery, E
Avery R T, frmr
Baird, Ellen, Forrest, frtr
Baird, Mrs, frtr
Bainfield, J V, farmer
Bainfield, R H, farmer
Barker, Mrs, laundress

BARNARD & SONS G W
Queen st. Tel 11. Grocers,
hardware & provision mer-
chants, drapers, mercers &
cutlery's agents for Yates'
reliable needs. The Sharn
Union & General Insurance
Co of A/asia, Ltd, "Domo"
separators

Barnard, Chas (B & Sons)
Barnard, Geo W (B & Sons)
Barnard, Geo W, junr (B & Sons)
Barrett, W E, frmr
Bell John, frmr
Biggs, E
Biswell, Percy, chemist
Blake & Reid, frmr
Blankinson, J M, sec hosp
Blythe, A, frmr
Blvthe R G, frmr
Bnoker, T
Bourne, C
Brewell, Alex R, com agt
Bryall, C A
Byale, R, frmr
Boyle, V, frmr

Boyle, W, frmr
Bradwood, G A
Brereton, W C, frmr
Brookman, F L, farmer
Brookman, Peter S
Brookman, Mrs Edward
Brown, C, frmr
Bunbury, E R, farmer
Bunbury, Mrs A. M R
Burgess, J
Burt, S, fisherman
Bussell, A J
Bussell, F A, farmer
Bussell, Miss E, farmer
Bussellton Butter Co
Bussellton Hosp (Nurse)
Blechyndon
Bussellton Library (G A Wright, sec)

Butler, S A, lghtkpr
Cannilliers, Fredk W
Capron, F J, rly emp
Carter, H, farmer
Carter, J
Carter, Percy, farmer
Carter, S, farmer
Chadwick, Mrs
Coates, E, chemist
Cockley, A, bchr
Cokerill J, frmr
Coley F J, frmr
Collett, W, linoman

Boyle, W, frmr
Bradwood, G A
Brereton, W C, frmr
Brookman, F L, farmer
Brookman, Peter S
Brookman, Mrs Edward
Brown, C, frmr
Bunbury, E R, farmer
Bunbury, Mrs A. M R
Burgess, J
Burt, S, fisherman
Bussell, A J
Bussell, F A, farmer
Bussell, Miss E, farmer
Bussellton Butter Co
Bussellton Hosp (Nurse)
Blechyndon
Bussellton Library (G A Wright, sec)

Butler, S A, lghtkpr
Cannilliers, Fredk W
Capron, F J, rly emp
Carter, H, farmer
Carter, J
Carter, Percy, farmer
Carter, S, farmer
Chadwick, Mrs
Coates, E, chemist
Cockley, A, bchr
Cokerill J, frmr
Coley F J, frmr
Collett, W, linoman

COMMERCIAL HOTEL
A O Rippon, ppr. Tel, 22
Cong Church
Connolly, Tim, crtkr, Caves
Conran, A W
Cookworthy, Mrs F G Sand-
louis
Coombs, Frnk, sta mstr
Cooper E J, frmr
Coulls A F, frmr
Cross, Geo
Cross, Mrs E F, frtr
Cross, Walter
Curtis, A J, farmer
Curtis, H G, frmr
Curtis, W H, farmer
Cuthbert, T A, farmer
Darlkin, F W
Davis J K, baker
Davis, W, frmr
Dawson, Gdwd, crtkr, Caves
Dawson J J, frmr
Denson, J H, farmer
Donald, Capt, stvedoro
Donald, R, frmr
Donnan, W
Dowell, J, farmer
Dowell, R
Dwards, G L, tea rms
Elliott, J, frtr
Elliott, R T, Espanado htl
Elston, phsphr
Ewing, M
Falkingham, R, stno msn
Fenner, E J
Finlayson, Robt, farmer
Finlayson W J, carrier
Nicholson, C, fancy gds
Fish W, frmr
Forrest John
Forrest, M A C
Forrest, W C
Foyles, B, asst lghtkpr
Fox, David
French, George E
Gale, Mrs R, farmer

Gale, Rlchd, J.P., grazier
Garrett, R G, bnk clk
Gibb & Morgan, mtr mechs
Gibb, Dave (Gibb & Morgan)
Gibb, P (G & Morgan)
Glew, W, council emp
Giffin, Thos
Hindley, Sydney
Hindley, Wm, labourer
Hindley, J C, farmer
Hann H J
Hann R G
Harding P J
Harris, A
Harrison, Thos
Hartrley, H, farmer
Harwood, W J, farmer
Hawkes E W, frmr
Hayes, H
Helyar, C
Henley H J, baker
Higgins, C
Higgins, Mrs H, frtr
Holgate, John, son, contr
Holgate, S R, bchr
Holgate, Wm R
Holmes, J, Wallace, solr
Houso, A
Houso, C P, farmer

Housley, A
Hutchins, J, tenmstr
Jack, B J, Ship htl
Jarvis, Miss A, dressmaker
Jeanes, J, tchr
Jones, J, bkmsht
Johnstone, J, farmer
Keenan, Mrs I, farmer
Keenan, W S
Killorby, B G L, auctnr and store
Killorby, Mrs
Kinnear, T W
Kinsella, E E
Klaohin, F
Knapton, Alfd E, carpnr
Knapton A S, carpnr
Knapton, L
Knapton, Mrs Margt
Knight, J T
Laffer, E F, nurse
Larklin, J C
Layman, I
Layman, M St C
Layman, N G
Layman, S P
Lightly, Frank
Locke, Alton G P, frmr
Locke, Justice B, contr
Lockhart, Alex, farmer
Lockwood W A, frmr
Lockyer, acct, Group Sett
Lodge, T S, farmer
Love, H
Lowe, G
Lumpers' Union (brch) (F.H. Vine, sec)
Lund, Geo, junr, per way
Lyle, L
McCormick, Rev (R C)
McDaniel, Edw, tobaccust
McNiel, Mrs Annie
McFadyen, M
McGregor, D W, frmr
McNess, C
Mann, W J, "South West-
ern News" & stur
Mason F
Mead F, contr
Mead, L F

Mead, Mrs, ref rooms
Meleri, G
Mewett, A
Mewett, H, contr
Miller, A, sergt in charge
Mills, Geo B, town clerk & sec Hds Board
Miller, Harry, farmer
Mildred, Rev S A (Eng)
Miner D, hd lghtkpr, Cape Naturaliste
Mitchell, B
Moore, B, btmkr
Morgan, A
Morgan, A E (Gibb & M)
Morris, Rev G (Cong)
Morris, W
Mulgrave E J, hrdrsr & nws-
agent
Nolan, E N, solr
Norman, F, linoman
O'Brien, —, saw miller
O'Connell, Mrs, Convalescent Home
O'Donnell Bros, grzrs
O'Meara, Harry
Osborn, T, carrier
Ost, Jas L, hilt inspr
Packard, R G, farmer
Paynd, A J
Peake, T W, strekpr
Pearce, L
Pellis, A, frmr
Pent, Edwd, labr
Phillips, J H, drpr
Pickard II, frmr
Picketing, W G, farmer
Piferer, Jos
Piles, A F
Pines, A H
Prosser, Thos, bootmkr & carrier
Prouse, Benj, farmer
Pullin, —, offer Group Sett
Raitt A, carrier
Raitt, Mrs S
Ral, P
Read E, const
Reading, H F
Reading, M C, frmr
Reilly, W R, frmr
Reynolds, P L, sec Vasse Race Club

Reynolds, J. H, farmer
Richardson, Thos, farmer
Rippon, A O, Commercial Hl
Robinson Mrs, stre
Rose, A N
Rose, W C
Rowe, plumber
Russell, H H, baker
Rutherford, G
Sansom, B
Sansom, T G, frmr
Savage James, frmr
Sayers, Const, frmr
Scanlan, Cecil H, plumber
Sears A H, frmr
Seymour, F C
Seymour, R J, frmr
Smith, A J
Smith, David
Smith, E A, frmr
Smith F C, frmr
Smith, Geo, Busselton htl
Smith Geo, frmr
Smith H H, frmr
Smith, Jno
Smith, Robt

Southn Dist Agric Soc (G Cross, sec)
Sowry A, frmr
State Butter Factory
Steele, Chas A, farmer
Stoddart, —, engr rlys
Stone, D McArthur, Vasso Hill
Strachin, W, fisherman
Sullivan, Geo, postmstr
Sussex Rds Bd (G B Milne, sec)
Sutton, Benj, farmer
Tangart, E H, strekpr
Taylor, H S, mgr W A Bk
Taylor, W D, farmer
Thomas, H J
Thomas, M E
Thompson, C W, mgr Stato Butter Factory
Thompson, Miss C, coffee pal
Thurkio, A E
Tonkin, E M
Tonkin, Mrs
Thorke W G, frmr
Thorn, B, frmr
Tixrent, E
Tottenham, E, acct rlys
Townshend, L J, strekpr
Troy, J
Tutton, G H K

VASSE HOTEL
(D McArthur Stone, pro-
prietor). See advt in Front
of Work
Vasse Racing Club (P L Reynolds, hon sec)
Veal, Mrs B
Vickery W W, frmr
Vine, F H (sec Lumpers' Un)
Vines, Fredk B, grzr
Walsh, R, hrdssr
Walton, G H
Waterhouse, J
Wauchope, W G
Weir, Peter, farmer
Weid Institute (W Glew, cretrr)

WESTERN AUSTRALIAN BANK, THE (H S Taylor, Emery). See advt in Front of Work
Whitmore, Mrs F C
Whittle J, frmr
Wilkinson, A
Wilkinson, L G
Williams, E
Willmet, H, frmr
Wright, G, clerk of courts
Wright, H E, farmer
Wynne-Kinnear, T K
Yates, W P, med pract
Yelverton, H G, farmer
Yeocking, S, engnr drvr
Gutterly, see Kookynie.
Byerine Pool, see Katanning.
Byfield's Mill, now known as Woolrool.

BYFORD, Murray
dist, 24 m SW by rl. Tel
Abernethy, Jno, frmr
Alexander, Hbt, gdnr
Annan, Miss

Atkinson, Harold B, frt grwr
Bourman, J F, frmr
Bradshaw, W, mgr Brk Wks
Briggs, Robt H, farmer
Briggs, Thos, dairy frmr
Broadhurst II H, orchrdst & frmr
Brookwell, J, brickmaker
Brossman, W, acct
Bullock II, brickmkr
Cardup Brick Works
Collins, Wm, buraar
Couthard Bros, mgrs Cardup Brick Works
Coxhead, J, grdnr, Cardup
Evans H, frmr
Flanagan, Mrs, bdgss
Gardiner, Arthur J, farmer
Hammill, J, tchr
Harding, W, bkmsht
Hewitt, J J, brickmkr
Kershaw, H, brickmkr
Lovell, B, gdnr
McKavanaugh —
Main, D, lhtokpr
Martin, Hbt, brickmkr
Martin, Mrs E H, bdgss
Masters, Harold J, frmr
Mathieson, A J, frmr
Mead, Mrs Henry, farmer
Mead, W H, farmer
Moore, W, farmer
Morris, J, labr

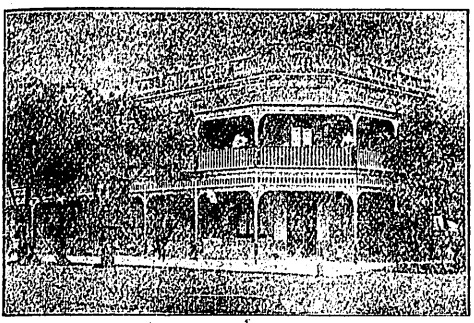
Nairn Wm, frmr, Cardup
Nairn Wm P, frmr
Orton, A E, dairy farmer
Parker, J, farmer
Phillip, W, gnar
Phillips W, brickmkr
Richardson W, dairyman
Richardson, Harry, farmer
Shill, W, stn mstr
Schlitzbeer, W, strekpr
Sladden, Arth, contr
State Brick Works (W Bradshaw, mgr)
Willis, W J, frt grwr

BYRO, 645 m N b rail
to Yalgoo, then coach 216 m fortnightly. See also Murgoo and Yalgoo, mail bag from Yalgoo
Campbell, Wm, tmstr
Clues, A, tmstr
Cowell, H, grdnr
Dartlo Bros Ltd, Byro stn
Discoll, W, stockman
Keogh, Jos M, mgr stn
Henderson, J, stockman
Legge, H, bkmsht
Murray J, stockman
Nairn, W, stockm
Pead, W J, bookkpr
Pluschke, J, stockman
Pocklington, J, tmstr
Scott, M, stkmn
Shanagassy, J, contr
Smith, G, stockman
Smith, R, stockman
Standring T, stn ovorseer
Cesar Anna Plains, see Wal-
lal
Calcaminc, see Northam

CALINGIRI, 104 m E
by rl fr Perth
Adams, Thos, farmer
Anderson, Wm, farmer
Bowes, Thos, frmr
Brennan, Thos, frmr
Chitty, C, Edwd, farmer
Chitty, David, farmer
Chitty, Vernon, farmer
Dobson, Jno, carpnr
Donnelly, Thos, farmer
Forrest W, frmr
Gorman, Dvd, frmr
Goudge, Jno, frmr
Halse, Thos H, farmer
Hansen, Martin F
Kennedy, C E, frmr
Hill, Herbt, frmr
Hoyne, J, frmr
Jones, Thos, frmr
Judge, Robt, frmr
King, R H
Lambert, Harold, frmr
Lindsay, Fredk, frmr
McCarthy, Gerald, frmr
McGill Bros, frmr
Manuel, Fred, frmr
Mullet, Stephn, clearg cont
Murphy, Jno
Murphy, Wm
de Marniel, O
O'Dea, Edwd, frmr
O'Dea, Jno, sen, farmer
O'Dea, Patk, farmer
O'Dea, Wm, frmr
Parker, Miss Grace, tchr
Parnell & Silco, frmr
Phelan, Wm
Pollard, Theo, frmr
Pratt, Jno, frmr
Riley, Miss Nancy, tchr
Rogers, Fred, farmer
Rogers, Mark, frmr
Roife, E, frmr
Tate, S, frmr
Thompson, Geo (W & T)
Twine, Jas S, farmer
Wade, Jno J, frmr
Waters, T, frmr
Waters, W A, frmr
Woods, Robt, frmr
Wray & Thompson, frmr
Wray, Wlfr, (W & T)
Callie, see York
Callion, see Daryhurst
Calool, see Bulla Bulling
Camballing, see Maradong
Camballup, see Forrest Hill
Cambridge Gulf, see Wynd-
ham
Camtray, see Jarrahwood
Candrup, see Kalgan Lower

CANE GRASS, 420 m
fr Perth rl
Black, B
Boul, Mrs A E
Bridges, S
Denohue, J
Gardiner, B
Gardiner, Mrs
Gatley, J

Gleeson, T
McCarthy, J M
Matthews, S
Payne, Mrs S
Proud, G
Sanders, J
Woodhams, A, Cane Grass htl
CANNING BRIDGE, 6
m fr Perth by ferry. Tel
(See also Apple Cross)
Alton, Chas
Bateman, Mrs W
Bateman, W, fruit grower
Dowell, Mrs
Foeney, Mrs J C
George, Joseph
Kennedy, C E, frmr
Hill, Herbt, frmr
Howard, Wm
Howard, Wm
Jensen, M
Mals, Ed
Moore, F H
Moore, Mrs F K
Ridley, Victor
Spargo, Bert
Spargo, Mrs S A
Stewart, J A
Sweetman, A
Thomson, F D
Canningdale, see Bedforddale
CANNING MILLS,
Dampier Dist, 31 m E rl
Abbott, Jno, orchardist
Bethers, L G, tchr
Lichrow, W H C, Forest Inn
hll
Phoroux, Thos, woodcuttr
Weyman, Fredk, contr
Canning Timber Station, see
Pickering Brook
CANNINGTON, Can-
ning dist, 8 m S fr Perth
by rl, 140 & SB. Pop,
700. See also Cannington
East
Alexander, W J A, Wharf st
Amoy, Harold, Swan at
Andrews Hy
Arnold, Chas, contr, Gibbs st
Arvidson, Jno A
Baker, N H
Baker, W E, Wharf st
Banning Miss L
Beer, Alft E, Fremantle rd
Beecher, L G, gdnr
Bell, Gladstone G, bkmsht
Bertelsmier, F
Bertelsmier, F J, pityr frmr
Blick, A
Blythe, C, Wimbledon rd
Bowen, E J, gdnr
Breen, Geo
Brennan, J, stnmstr
Broadbent, Mrs, River at
Brown, W, pityr 2mr, Nichol-
son rd
Buckell, G, Nicholson rd
Cameron, A S
Cannington Rds Bd (W Jones,
sec)
Carr Alex
Cockram, Edgar E, frmr
Cockram, Herbt J, frmr, Alby
rd



The VASSE HOTEL

Is the most centrally situated and up-to-date House in Town, within four minutes' walk of the Beach, Railway Station, Post Office, Bowling Green, Croquet Lawns, Tennis Courts, Golf Links, etc.

Terms Moderate
Goldfields and City Visitors Specially Catered For.

The famous Yallingup and Margaret River Cave within easy distance. Coaches and Motor Cars leave the VASSE HOTEL as required.

D. McARTHUR STONE, Proprietor
BUSSELTON