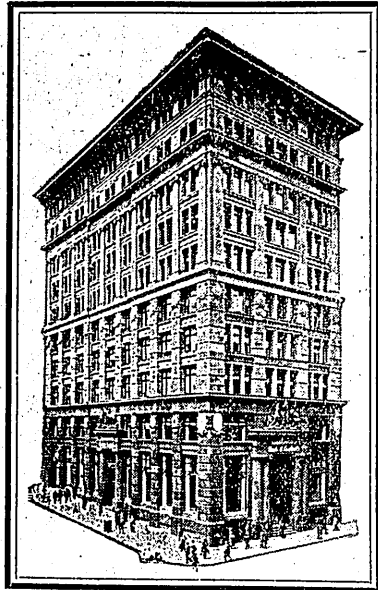


Commonwealth Bank of Australia
 HEAD OFFICE SYDNEY



ESTABLISHED 1912

GOVERNOR SIR DENISON MILLER, K.C.M.G.
 DEPUTY GOVERNOR JAMES KELL, Esq.



Head Office, Sydney

General Bank Business

conducted at all Branches in the Principal Cities and Towns of Australia, Rabaul, and London.

Also

Savings Bank Business

at all Branches of the Bank, and at 3049 Agencies in Australia, Papua, New Britain, Solomon Islands and the Pacific.

Public Safe Deposit: Head Office, Sydney

NEW ZEALAND INSURANCE COY. LTD.

Capital
 £1,500,000



OF W.A. Over £50,000 invested in W.A.

STRONGEST AUSTRALASIAN COMPANY

Transacts Insurances against:

- FIRE.**—Including Growing Crops, Stacks, Farm Buildings, and Machinery in the open.
- MARINE.**—Including Wool from Sheep's Back to Auctioneer's Store.
- LIVE STOCK.**—Including Foaling and Castration Risks.
- ACCIDENT.**—Including Employers' Liability, Workers' Compensation, Guarantee, and all other Branches of Accident Insurance.

Head Office for W.A.:

105 St. George's Terrace, Perth
 A. J. SCANDRETT, Manager.

AGENCIES THROUGHOUT THE STATE

General Index to Contents

	Page.		Page.		Page.
ABORIGINES DEPARTMENT	682	AREA	685	AUDITOR-GENERAL	681
ACCOUNTANTS & AUDITORS	579	ART GALLERY & MUSEUM	610	AUSTRALIA, HIGH COURT OF	681
ADVERTISERS—INDEX TO NAMES	Front	ASSAYERS	598	AUSTRALIAN ARMY SERVICE	681
AGENT-GENERAL—LONDON	685	ASSAYER'S OFFICE	684	CORPS	681
AGRICULTURE, DEPARTMENT OF	687	ASSISTED HOSPITALS	667	AUSTRALIAN NATIVES' ASSN	609
AGRICULTURAL BANK	580	ASSOC. OF WORKERS—INDUS-TRIAL	699	BAILIFFS, LOCAL COURT	634
AGRICULTURAL DIRECTORY	687	ASTRONOMER	683	BANK TOWNS	580
AGRICULTURAL SOCIETIES	688	ASTRONOMICAL DEPARTMENT	683	BANKING & FINANCE	580
ALPHABETICAL DIRECTORY	295	ASYLUMS FOR THE INSANE	677	BANKRUPTCY	633
ANALYTICAL DEPARTMENT	684	ATTORNEY-GENERAL—COMMONWEALTH	681	BAPTIST CHURCH	670
ANALYSIS	586	AUDIT DEPARTMENT	681	BARRISTERS & SOLICITORS	634
APIARISTS	692			BARRISTERS' BOARD	634
ARCHITECTURAL DIVISION	684			BATHS	590