

Grassdale, see Wandering.
Balingup & York.
Grassland's, see Pingley & Mourmabine.

GRASSMERE, 382 m. fr. Perth by rail. See **TORBAY JUNCT.**

Grass Patch, see Espérance.

GRASS VALLEY, Central District, 76 m. by rail fr. Perth (sin. 11/7; 7/1; ret. 17/6; 10/8); tel. & M. O. O.

Beaumont E. frm. mgr
Breeze A. dealer
Carter Jno. farmer
Christmass Edwd. farmer
Cooke Frank V. farmer
Dempster Cedric, fmr
Dempster Mrs. Maud
Dennis R. W. farmer
Dufall Geo. C. pstmstr
Enright J. farmer
Flaherty Jno. ganger
Forward F. H. farmer
Forward Geo. farmer
Forward Hry. farmer
Frayne Cyril H. night. stn. mstr
Frost Jack, farmer
Frost James, farmer
Frost Robert, farmer
Frost Solomon, farmer
Frost Wm. farmer
Gale Geo. farmer
Longbottom Aubrey C. frm. mgr
McEvoy Jno. rep. Prims'. Merc. Union

McKinley E. J. farm mgr
Marsey Thos. H. rep. Darling & Co
Martin Andrew, farmer
Martin Thos. frm. mgr
Matthews Jas. blacksmith
Matthews Robt. farmer
Meeres Frank, farmer
Merriam Jno. farmer
Murphy C. H. farmer
O'Brien Wm. R. tchr
O'Driscoll Jeremiah, farmer
O'Driscoll Patk. farmer
O'Rourke F. storekpr
Post Geo. stn. mstr
Roe William, farmer
Sermon Jus. farmer
Sermon Michael, farmer
Sermon Richd. C. farmer
Sermon Thos. wheelwr
Sermon Wm
Spencer Clarence G. farmer
Walsh Fredk. K. farmer
Wenlock Harry, agt
Woodleton B. Grass Valley htl

Great Fingall, see Kurnalpi.

GREENBUSHES, TINFIELDS, Nelson district. 159 m. S. S. W. fr. Perth by rail (sin. 25/8; 15/11; ret. 38/6; 23/11); newsp. "Blackwood Times" (bi-wkly.); W. A. bank; tel. M. O. & S. D.
Angus Herbt. miner
Angus R. miner
Armstrong Johanna J
Armstrong Lindsay Richd
Armstrong Robt. H. fruiterer
Ashley Jas. Hy. miner
Baird Alex. blksth
Baird Hy.

Baldock C. R.
Baldock H. L.
Barker Jos.
Barnett Alexr
Barrymore Hugh S. buyer of tin ore
Bath Wm
Beaulehold Jos. R. miner
Beck Edwd. sleeper hewer
Belk Wm. laborer
Bird Witr. T. solr. (brch)
Blakeney & Teede, grocers
Blakeney E. P. baker
Blum Hugh
Boucher Syd. Talbot, miner
Bourke Nichls. Jno
Brennan Jno. A. farmer
Brinkman Fred. (Shaw & B)
Brooks Sydney
Brown Percy E. constable
Brown Thos. A. G. engine driver
Brown W. A
Buchanan E. H
Buchanan E. H
Buchanan W. farmer
Callaghan Jas. A. miner
Campbell Ernest J. mill foreman
Campbell Jas. saw sharpener
Cargoe Bros. storekprs
Carr H. grnger
Cashin Mrs. C
Chambers Francis E
Chittock Wm. Jas
Clark Jno. mine owner
Clarke Chas
Clayton & Son, F. E. storekprs
Clayton L. E. (C. & Son)
Clayton Mrs. F. E. (C. & Son)
Clifford J. foreman
Cody Jas. (South)
Coleman W. A. (South)
Collins Fredk. miner
Collins John, miner
Collins Thos. miner

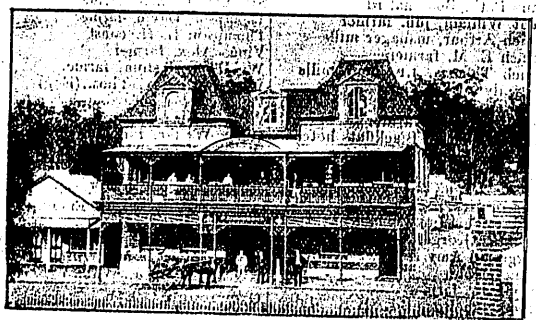
COMMERCIAL UNION ASSURANCE CO. LTD. (fire, marine, accident) (H. G. Keyser, agt)

Cooke Chas. J. Court Ho. htl
Cooper Charles R. mine owner
Cosgrove Thos. Shamrock hotel
Cotter Timothy H. miner

COURT HOUSE HOTEL (Chas. J. Cooke, propr.). See advt

Cowper Thos. T. miner
Cox Frank, miner
Cox Hudson A. miner
Cox William, carter
Cracknell Mrs. B. baker
Culph Robt. Jas
Cumming Jas
Currell Walter
Cutthbert Thos. Edwd
Dahl Jos. C. hairdrsr & tob
Davey W. J. miner
Davis H. A. draper
Dawson F. J. matron hosp
Dawson Thos. carter
Dawson W. mining regr
Deeks Thos. miner
Dewison Fredk. J. accountant
Dillitant Jas
Dobbs Jas
Dobbs Wm
Dowley Geo. miner
Dowley Jas. E. P. farmer
Duggan Rody, miner

Dunning Edwd. G. bootmkr
Eddy Mrs. Elizabeth
Edwards Edward, grocer
Elliott Chas
Elliott Harry, carter
Elliott Mrs. sen; Sth. Greenbushes
Evershed Wm. draper
Exelby Thos. photographer
Eyles Ernest J. billiard marker
Field Witr. J. miner
Findlay Richd. P. painter
Fitzgerald Jas. A.
Florance A. J. teacher
Fogarty George, miner
Fogarty J. B. miner
Fontanella Fiorenza, bootmkr
Foster Mrs. Marion, brdng. hse. kpr
Foster Wm. laborer
Forward Wm. (Bush Landing)
Frankie Chas. farmer
Gallagher J. accountant
Galloway W. J. mgr. Nat. Mut. Life
Garcia Barney, tobacconist
Gard Thos. miner
Geoghan Wm
Giese Ernest, miner
Giese Harry
Gilbert Miss Eliz. postmstrss. (Sth)
Golder Alfd. E. chemist
Graham W. T. foreman Rds. Bd
Gray H. G. fruiter
Greenbushes Hosp. (E. R. Robinson, sec.; F. J. Dawson, matron)
Greenb. Rds. Bd. (E. R. Robinson, sec)
Greenbushes Tin Mining & Water Supply Synd. (J. Lindsay, mgr)
Gregory Thos. miner
Hall J. W. engine driver
Hancock Saml. engine driver
Hanks Alfd
Harrison W. R. baker
Harvey Aaron, teacher
Henderson W. A. eng. driver
Herbert John W. tinsmith
Hester E. N. farmer
Hobbs Arthur G. baker
Hooks Mrs. storekpr
Huitson Jno. Exchange hotel
Hunter Josph. miner
Hynes J. J. miner
Illingworth Stanley, tllr. W. A. Bk
Ireland W. T
Jessop Alfd. E. miner
Johnson Jno. miner
Jones Jno. S. farmer
Kennedy Even, engine driver
Kerr J. C. mgr. Timber Corpn
Keyser Herbt. G. land agt
Keyser Mrs. H. G. news agt
Knapton Clarence, fmr
Knapton Jno. fmr
Knapton Mary, boarding hse
Knight John B. contr
Knight Wm. C. farmer
Lamb Geo. miner (South)
Lawrence Ernest L. eng. driver
Leighton W. miner
Lewis — nurse
Lewis Thos. miner
Lillywhite Ed. M. assayer
Linberg Neil
Lindsay Jno. mgr. Greenbushes
Tin Mng. & Water Supply Synd
Litchfield Geo. miner
Littlefield A. W. miner
McAlinden E. N. cordial muftr
McGregor F. C. miner
McGregor Miss I. teacher
McKenzie Geo. A. engr



COURT HOUSE HOTEL, GREENBUSHES.

Acknowledged by all to be one of the Finest Hotels in the State.

Three Sample Rooms for Commercial Travellers.

Motors for Hire & Trips arranged to all parts of the District. Tariff 8s. per day.

CHARLES J. COOKE - Proprietor.

McKernan J. H. contr
McKitbin Adam, miner
McLaughlan Hy. blksth
McLean Wm. A. miner (South)
McLeod Alex. contr
McNamara Miss M. dressmkr
McVicar Douglas H. timber insp
Magill Arthur, miner
Magill Matthew, timber mcht
Magowan Clement, miner
Mahoney J. J
Marriott Robt. miner
Mazel L. storekpr
May & Morgan, liv. stab. & ml. contrs
May Jno. (May & Morgan)
Meany Dennis, farmer
Miller E. H. miner
Millman Jno. miner
Mitchell Ernest A. farmer
Mitchell Geo. A. miner
Molloy Jno
Molloy Jos. carptr
Montgomery J. J. gdnr
Morgan Alfd. (May & M)
Merris David V. engineer
Moss Arth
Moss Frank, mine owner
Muldowney Robt. miner
NATIONAL MUTUAL LIFE ASSOCIATION OF AUSTRALASIA (W. J. Galloway, agent)
Nelson Wm. H. med. prac
Nutt H. W. Duke of York htl
Olsen Jens Jensen, miner
Orr Fanny, nurse
Osborn Mrs. E. F. confcr
Parish Edwin C. carpenter & furn
Patterson Saml. J. eng. driver
Paul Jno. miner
Payne E. H. fmr
Pearce Leslie, miner
Pears Oscar, miner
Phillips Edwd. J. carter
Phillips W. M. contr
Portwood Jos. miner
Pietz Otto F
Quick H. P. miner
Rands Albt. E. miner
Ratray Edwd
Ratray Jas. mine mgr
Rawnsley Alfd. carter
Reading & Sons, "Blackwood Times" (bi-wkly)
Reading Geo. E. editor "Times"
Reidy Rev. J. (R. C)
Richardis Regnd

Rielly Wm. farmer
Roberts Owen, storekpr
Robinson E. R. sec. Rds. Bd. & Hosp
Robinson Geo. E. miner
Roger Rev. W. Wail. (Meth)
Rogers Andrew, tailor
Rosewall Fred. grocer
Rudd Geo. blksth
Scarlett A. P. G. farmer
Scott C. R. carptr
Scott Jno. L. miner
Scully Annie J
Scully Thos. farmer
Scutt H. D. mgr. W. A. bank
Shanahan Mrs. C. bdng. ho
Shaw & Brinkman, slpr. cntrs. & carriers
Shaw Jno. (S. & Brinkman)
Sheron Jas. bookseller
Sherwood Wm. mine mgr
Shivers Michl. miner
Silva Fred, fishngr
Slater Alex. M. miner
Slattery Austin, engr
Soden Reuben R
Suden Wm. W. storekpr
Sorensen A. saddler
South Western Butchering Co
Stainer Elias, farmer
Stevens Fred. W. butcher
Stringer Richd
Sullivan Walter F. miner
Tauner Jno. miner
Taylor Wm. tailor
Teede Alfd. E. (Blakeney & T)
Thomas W. J
Thorley Edwd. D. engr
Till A. G. baker
Tillbrook A
Timber Corporation Ltd. (The), J. C. Kerr, mgr
Tomlinson Geo. H. hairdrsr
Trelgar Jas. H. miner
Turner Wm. miner
Uphill Robt. G. butcher
Wallis Chas. miner
Wagner — tchr
Watson Sidney
Watson Wm. Greenbushes htl
Watts A. L. miner
Webb J. J. carptr
Webster Wm. B. music tchr
WESTERN AUSTRALIAN BANK (THE) (H. D. Scutt, mgr.) See advert. in Front of Work
Wilkes Ephraim, miner

Wilkes Wm. miner
Williams Geo. miner
Williams Rev. Jos. (Eng)
Williams Percy J. dairyman
Williams R. senr
Williams Robt. J. miner
Williamson James H. solicitor
Williamson Patk. miner
Wright Thos. butcher
Yeardye Albt. miner
Young R. J. miner
Greenbushes Sth. see Sth. Greenbushes.
Greenbushes Timber Mills, see Greenbushes.

GREEN HILLS, Avon district. 92 m. S.E. fr. Perth by rail (sin. 14/3; 8/9; ret. 21/5; 13/3); tel.; Bank W. A.

Anderson Brothers, farmers
Anderson Robt. farmer
Bailey Wm. (Murphy & B)
Bell D. A. mgr. W. A. Bank
Bishop Charles, farmer
Bishop Joseph, farmer
Boyle George, farmer
Boyle Richard, farmer
Boyle Richd. junr
Boyle Thos. farmer
Carr Robert G. farmer
Chipper W. W. store
Conway Michael, farmer
Green Hills Roads Bld
(William Thos. farmer
Lodge Arthur, farmer
McGinn David (Monger & McG)
McMullen James & Wm. farmers
McMullen Alfred H. farmer
Meares Seymour B. farmer
Millar Barclay G. D. farmer
Hills Mrs. Leah, farmer
Monger & McGinn, blacksmiths
Monger Sm. Henry. (M. & McG)
Murphy & Bailey, farmers
Murphy Wm. (M. & Bailey)
Parker E. Giffard
Penny F. F. & W. farmers
Penny Charles, farmer
Penny Henry, farmer
Penny Henry, jun. farmer
Penny Walter, farmer
Penny William, farmer
Pike Reuben, farmer
Reid John J. farmer
Rickey Jno. W. farmer