

THE BEVERLEY TIMES.

Published at Beverley every Saturday Morning.

AN ASSURED CIRCULATION THROUGHOUT ONE OF THE FINEST AGRICULTURAL DISTRICTS OF THE STATE.

Subscription: 3/- per quarter or 10/- per year in advance.

LIBERAL SCALE OF ADVERTISING CHARGES.

Agents:—GORDON & GOTCH, London, and all Australian Capitals.

C. DAWSON, Proprietor, BEVERLEY, W.A.

BEVERLEY, Beverley dist. on the Avon river. 99 m. S.E. fr. Perth by rail (sin. 15/5, 9/6; ret. 23/2, 14/4); banks (W. A., Nat., Asia & Union); newspaper, "Times;" tel., M.O. & sav. bk. Pop. 575.

Adams James, farmer, East Beverley
 Adamson Geo. farmer
 Aitken H. G. newsagt
 Algar Thos
 Anderson D
 Atkin W. S. farmer, East Beverley
 Auckett J. W. sec. Rifle Club
 Austin Charles T. farmer
 Bailey C. farmer
BANK OF AUSTRALASIA (E. S. Wayland, mgr.). See advt
 Burnden J. T
 Bartram Jno
 Bateman Wm. H. farmer
 Bechtel Robt. grazier
 Becroft Alf
 Bell Arthur, Geo. & John, farmers, East Beverley
 Benson Harry, carpenter
 Beverley Agricultural Society, D. F. Gollan, sec
 Beverley Carrying Co.
 W. C. Townsend, mgr
 Beverley Cash Drapery Co
 Beverley Football Assoc
 Beverley Hospital.
 F. S. Butler, med. officer
 Beverley Mechanics' Institute, E. L. Elsegood, sec
 Beverley Rifle Club (J.W. Auckett)
 Beverley Roads Board,
 Thos. E. Underdown, sec

BERIA, Mt. Margaret Goldfields. 597 m. fr. Perth; rail to Laver-ton (sin. 96/1, 60/2; ret. 144/11, 90/4), thence 5 miles by coach daily; tel. M. O. O.

Alfonso Vincent, gardener
 Annear R. miner
 Cordingley Frank
 Crampton Lionel R. storekeeper
 Daniels Wm. livery stables
 Davern Jno. C. teacher
 Delaney Kate, bdg. hse. kpr
 Grant Mrs. E. T. laundry
 Guthrie Wemyss M. acct. Lancefield
 Heims Mrs. bdg. hse. kpr
 Hetherington J
 Hosbach W. baker
 Iglie Chas. carpenter
 Listberger J. G. tailor
 McCulloch Wm. engine driver
 Millbank Geo. Lancefield htl
 Miller Robt. storekpr
 Mundy & Co. butchers
 Tinnion & Myhill, storekprs
 Tonkin Albt. E
Beringarra, see Murgoo.

BERKSHIRE VALLEY, Melbourne dist. 133 m. N. fr. Perth; rail to Moora (sin. 17/4, 12/11; ret. 26/2, 19/5), thence 25 m. by coach (bi-wkly). (ret. 5/-).

Berkshire Valley R. C. Mission (Benedictine Community)
 Harvey W. H
 Hunter Jno. farmer
 Hunter Robt. farmer
 Lanagan James
 Piers William, farmer
 Skinner J. R. frmr
 Berkshire Villa, see Busselton.
 Berne's Flat, see Moolyella.
 Bernier Island, see Carnarvon.
 Berrigrin, see Sandstone.

Blechynden Jos. farmer
 Blechynden Sydney T. Kokeby
 Bolger Jas. Railway hotel
 Bone A. E. mgr. Gt. Southern Meat Supply Co
 Boundy Alf. plumber
 Bowen Geo. painter
 Bowron Thos. Kokeby
 Boyle Mrs. T. laundry
 Bremmer Bros. farmers
 Brereton Dvd. Kokeby
 Brereton Wm. E. Kokeby
 Brockman E. B. farmer
 Brody Amelia A
 Broun Frank, M.L.A. farmer
 Broun James, Southbourne
 Broun Jas. W
 Brown Wm. V. Kokeby
 Burgoyne George, carpenter
 Burgoyne Nurse, priv. hosp
 Burrowes Robt. J. N. Kokeby
 Butland A. mail contr
 Butler F. S. med. pract
 Carr A. & J. farmers
 Cartwright Edwn
 Caudle Sydney, farmer
 Chester Stanley C. agt. Sandover & Co
 Chivrell Alf
 Clarke F. W
 Cludow Wm. blksmith
 Clulow Wm. Kokeby
 Collard Davd. Kokeby
 Collard Rosina J. Kokeby
COMMERCIAL UNION ASSUR- ANCE CO. LTD.
 J. R. Norris, agent
 Cooper Stuart A
 Cooper W. J., J.P. merchant
 Corry J. H. farmer
 Curtis Geo
 Dalgety & Co. Ltd.
 D. H. Forbes, agt
 Davey Fredk. contr
 Davey Thomas, builder
 Davies Dvd
 Dawson Chas. propr. "Times"
 Ding A. W. agent
 Doncon E. farmer, Timaru
 Doncon Robt. C
 Doohan Wm
 Draper A. W
 Draper Wm. A
 Drummond & Co. Ltd. auctrs. (H)
 Du Bulay
 Duff Alex. Beverley hotel
 Edwards Alfred G. farmer

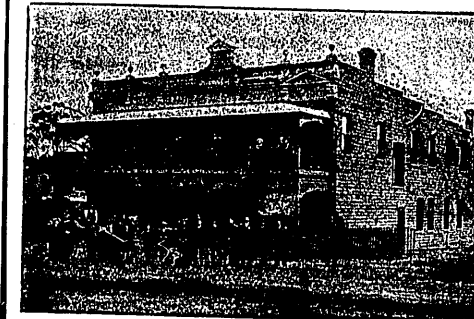
BEVERLEY TIMES (THE) (C. Dawson, propr.), published at Beverley every Saturday morning; an assured circulation throughout one of the finest agricultural districts of the State. Subscription, 3s. per quarter or 10s. per year in advance. See advt. Beverley
 Bishop Fredk
 Bishop Jasper
 Bishop Joseph
 Blakiston Eleanor
 Blechynden Arth. Kokeby
 Blechynden C. E. farmer
 Blechynden F. & H. frms. Roselnds
 Blechynden Herbt. H

Edwards Anne E
 Edwards Chas. store
 Edwards B
 Edwards E. S
 Edwards Edwd. W
 Edwards Jno. farmer
 Edwards L. A. frmr
 Edwards Louis A. farmer
 Edwards M. C. carptr
 Edwards Mrs. A. priv. hosp
 Edwards Oliver J
 Edwards Peter E. R. town clerk
 Edwards R. Thomas, farmer
 Elder, Shenton & Co. Ltd. (br.) mchts. (W. J. Gillett, mgr)
 Elding O. hairdresser
 Elliott Jno. frmr. East Beverley
 Elliott Jno. frmr. Kokeby
 Elliott T. W. est. agent
 Ellis Jos. farmer
 Elsegood E. L. sec. Mech. Inst
 Enright Anthony
 Farrell Alf. auctnr
 Fawcett S. wheelwright
 Fawkner C. M. M. mgr. Nat. Bk
 Ferguson Wm
 Fisher H. M. farmer, St. Aubyns
 Fisher W. G. frmr
 Fleay Alex. F. J
 Fleay Ernst. H. W
 Fleay John E. J. farmer
 Fleay Onslow E. H
 Fleet John
 Fleet Saml
 Fletcher Joshua
 Forbes D. H. agt. Guardian Ass. Co
 Ford Ernst
 Curtis Geo
 Ford Thos. farmer
 Forshaw & Edwards, tailors
 Forshaw Robt. (F. & Edwards)
 Fowler Alf. H.
 Fraser A. carptr
 Fraser Hutch C. L
 Gamble Fred. C. storekpr
 Gartrell Archd
 Gayton Jno.
 Gifford H. J. saddler
 Gillett Wm. J. mgr. Elder, Shenton & Co. Ltd. & sec. Cricket club
 Gillies Mrs. G. dressmkr
 Gillies Mrs. I. dressmkr
 Gollan D. F. com. agt
 Gould Jno. Kokeby

Great Southern Meat Supply Coy. (A. E. Bone, mgr.), butchers
 Greenwood A. S. postal asst
 Grist Wm
 Groser H. W. farmer
 Groser Rev. Canon Chas. E. (Eng)
 Grover Geo. farmer
GUARDIAN ASSURANCE CO. LTD. (fire & accident) (D. H. Forbes, agt)
 Hadlow Arth. baker, Kokeby
 Hallinan Rev. Mors (R. C)
 Hammersley Bevon, farmer
 Hamstrom A. K. contr
 Hancock & Co. bootmks
 Hancock Aubrey J
 Hancock G. Everett, farmer
 Hancock J. C. bootmkr
 Hancock R. J. farmer
 Hatfield A. clerk W. A. Bank
 Hayes F. R
 Heal Arth. farmer
 Hick Thos
 Hine H. farmer
 Hine J. farmer
 Hine Mrs. E. farmer
 Hogg J. M. Freemasons' htl
 Hunt P. H
 Hunter —, blksmith
 Hunter H. outfitter
 Hunter Jno. W
 Hutchinson Lorenzo
 Hutton Geo. farmer
 Hyde Rev. W. G. (Meth)
 Isaacs Nurse, priv. hosp
 Jackson Alfred, farmer
 Jackson E. fuel dr
 Jackson Ernest, farmer
 Jackson Thomas, farmer
 Jackson Walter, farmer
 Jackson Wm. farmer
 Jefferson G. H. bandmstr
 Jenkins H. painter
 Johnson Frank
 Johnson James
 Johnson Thos. C. P
 Johnson Wm
 Jones Alf. J. farmer, East Beverley
 Jones Jonathan B
 Justin Jno. coach builder
 Keane Jno
 Keane Patk. rly. employee
 Kennedy E. J. postmstr
 Kilpatrick Arth. frmr. Bally Bally
 Kilpatrick David, frmr. Bally Bally

Kilpatrick Fanny L
 Kilpatrick Fraser
 Kilpatrick P. loose bag holder,
 Bally Bally
 Lambert F. coffee palace
 Lambert Mrs. fruit. & tea rms
 Lambert Percy, cordial mfr
 Langford & Son, blacksmiths & ironmongers
 Langsford Edw. (L. & Son)
 Langsford W. J. (L. & Son)
 Leake F. W. solr
 Lochmere R. T. farmer
 Lennard Alex. B. frmr
 Lennard E. G. Barrett
 Lennard E. T. B. frmr
 Lennard Francis B. farmer
 Lennard Henry Barrett, farmer
 Lichberg Aug. R. Kokeby htl.
 Kokeby
 Lodge Frank
 Lukin Hy. Jno. farmer
 Lupton Paul A
 Lutrel Wm
 McBride A. livery stables
 McDonald F. M. farmer
 McDonald Hugh, postal asst
 McDonald J. constable
 McDonnell Thomas H. contractor
 McGee Ellen
 McGeary Henry, farmer
 McGoough Wm. farmer
 McGrath J. W. farmer
 McGregor J. C. chemist
 McGrishen Wm
 McInerney Thos. P
 McKay J. C. store, & baker
 McKenzie A
 McLean Bros. farmers, County Peak
 McLean Jas
 McLennon Hugh
 McMinn T. H. sec. Football Assoc
 Mainard Gilb. N. Kokeby
 Mann Caroline
 Martin A. const
 Martin Alf. S
 Martin Jas. R. auct. est. agt. & cordial mfr
 Meekin Thos
 Messenger Geo. W. Kokeby
 Messenger Harry
 Millars' Timber & Trading Co. Ltd. (J. Rls, mgr)
 Morrison Mrs. M. rly. ref. rooms

— Telephone 51 Beverley. —



White Hart Hotel,

BEVERLEY,

H. C. Cregilgas, Proprietor.

Late of GREENBUSHES and MECKERING.

Excellent Cuisine.

Liquors True to Label.

Attention and Civility.

Telephone 51 Beverley.

