

ROBISON & NORMAN, LTD.,

Broome, W.A.,

... Ship Owners,
Pearlers & General Merchants.

BUYERS OF PEARLS AND PEARL SHELL.

General Agents, Wine & Spirit Merchants,
 Grocers, Ship Chandlers, Ironmongers,
 Drapers, Boot & Shoe Importers.

AGENCIES.

UNITED INSURANCE COY.

COLONIAL MUTUAL (FIRE) INSURANCE COY.

KUPPERS' ELBERFELD LAGER BEER.

HEINKE'S DIVING GEAR AND ACCESSORIES A
 SPECIALITY.

READ'S DOG'S HEAD STOUT AND PALE
 ALE.

MUNRO'S HOUSE OF LORDS WHISKEY.

HENNESSY'S BRANDIES, &c.

We CARRY the LARGEST STOCKS in the NOR'-WEST.

Telegraphic Address: "ROBINOR," BROOME. Codes: A1, & A.B.C. 5th Edition.

BROOME, W.A.

HOTEL CONTINENTAL,

*Coollest and most comfortable
 Hotel in the Tropics.*

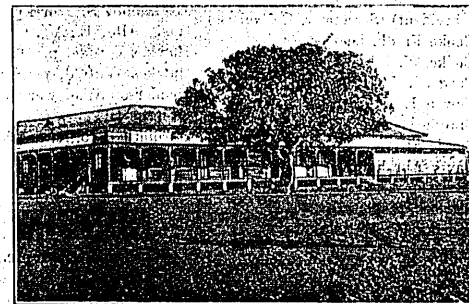
BROOME.

F. RODRIGUEZ, Proprietor.

Every convenience for
 Boarders and Travellers.

Best position in the Town.
 Only Best Liquors and Cigars Stocked.

Cattersalls for Broome Races.



AGENT FOR THE THE STANDARD GILLETT LIGHT CO.
 NORTH-WEST FOR— *The Simplest, Cheapest and Best.*
 —PRICE AND PARTICULARS ON APPLICATION.—

BROOME, on Roebuck Bay, W. Kimberley dist. 1,386 m. N.E. by Adel. S. S. Co. Ltd. steamer fr. Perth (fares, sin. £11, £7; ret. £17 15s.); branch Union & W. A. banks; newspaper ("Broome Chronicle") (pub. wkly.); post, parcels post, tel., M. O., P. N. & S. B. offices; cable station & pearl fisheries here.	Baker Olford E. Baldoek A. C. pearler Baldoek Jno. W. E. (Potter & B) Bardwell B. E. pearler Barnes J. pearler Bauer & Shaumer, pearl mchts Bauer F. (B. & Shaumer) Beaumont Wm. A. acct Bell D. pearler Bennett T. P. telegraphist Beveridge Robt. J. clerk Biddles Frank, pearler & stn. ownr Biddles Hugh T. pearler Black Jno. clerk Blackett H. clerk Blackett Robt. clerk Blackman Chas. Hy. pearler Blackman Otto W. (Archer & B) Bliok G. res. med. officer Bliok Penn, pearler	Bourne H. G. (B. & Inglis) Brooks Ven. Archdeacon (O. E.) "Broome Chronicle," E. L. Green, edr Broome Tennis Club, J. E. McKellar, sec Broome Turf Club, W. A. Beaumont, sec Brown Jno. solicitor Buddivent J. pearler Burns Geo. H. pearler Byrne John, pearler Carnet Bay Station, E. H. Hunter, owner Challand A. E. clerk Chamberlain A. & G. pearlers Chamberlain A. (A. & G. C) Chamberlain Leonard Chamberlain W. A. (A. & G. C) Chapman Henry, watchman Chapple E. H. plumber Chi Jno. pearler Clarke John, pearler Clarke T. pearler Cookrane Ellen, Governor Broome hotel Coe Capt. Harold, harbour master Coleman C. E. shell carver
Adelaide S.S. Co. Ltd. Streeter & Co. agents Ah Wah, storekeeper Aikens Don G. clerk Anderson Adolf, carpenter Anderson S. P. light keeper Annear L. pearler Annear W. pearler Annear W. H. clerk Archer & Blackman, merchants Archer Jno. M. (A. & Blackman) Archer Thos. pearler Arundel Sherwin, clerk Ashton E. hairdresser Badger E. pearler Bagge C. sailmaker		BOURNE & INGLIS, general storekeepers, pearlers, wine & spirit merchants & auc- tioneers; agents for Swan Brew- ery Ltd. & Baynes Bros. Queens- land meats