

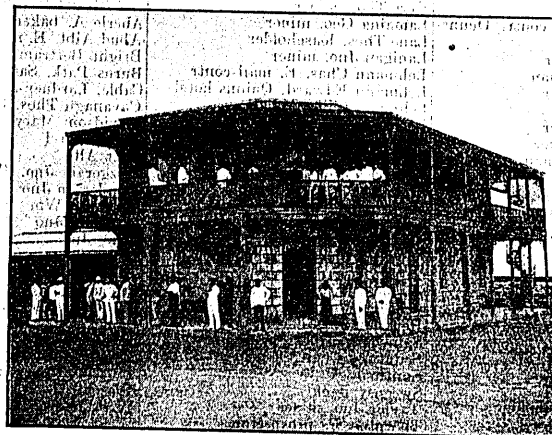
PORT HEDLAND—continued.
 Hung Sing & Co. storekprs
 Indee Station (Edkins Bros. & Stanford, owners)
 Jacoby J. contr. & plumber
 Kerr Bros. owners Wallarencia sta
 Kerr Chas. (K. Bros)
 Kerr Wm. (K. Bros)
 Knight George
 Lal Mahomet, camel owner
 Lawrence H
 Leech Arundel
 Liddiard Frank, coach builder & blacksmith
 Lissiman Jas. H. draper & clothier
 McCleery Benj. postmaster
 McGuire W. operator
 McKenzie Robt. H
 Macpherson Geo. T. O. Boodarie
 Manly Jos
 Manly W
 Masatani —, laundry
 Mauger Norman, storekeeper
 Mauger Ronald, storeman
 Meiklojohn E
 Molloy W. blacksmith
 Moore Joseph D. butcher
 Mullner Alfred, storekpr
 Mullner Rudolph
 Nak Mahomet, camel owner
 Nicholson E. J. H. (F. W. Roberts, mgr.), ore purchaser
 Nor-West Brewery & Ice Co. Ltd. Nor-West, mgr
 O'Connor A. L. Esplanade hotel
 O'Neill Daniel
PIER HOTEL (Mrs. M.A. Pilkington, proprietress). The most up to date house in Port Hedland. See advt. P. H
 Pilkington Mrs. M. A. Pier hotel
 Pilkington Harold
 Pippingara Stn. (Richardson & Son)
PORT HEDLAND HOTEL (L. E. Woodman, propr.) (late of Tolley & Co. Ltd. Fntlo.). See advt. Port Hedland
 Portree Stn. (Craig & Roberts, owners)
 Rhill W. S. Poondina hotel
 Richardson & Son (Pippingara stn)
 Richardson Edwd. (R. & Son)
 Richardson Thos. E. (Pippingara stn)
 Roberts F. W. mgr. E. J. H. Nicholson
 Roberts Percy (Craig & R)
 Roots Walter Jas
 Roxburgh E. W. mgr. Union Bank
 Secunda Shah, camel owner
 See Woh & Co. tailors
 Smith Herbt
 Stanford Jno. (Edkins Bros. & S)
 Stewart B. Govt. wharfinger
 Stewart J
 Strelly Stn. (Corney & Stewart, owners)
 Tatlock Geo. carrier
 Tatlock Henry, camel owner
 Taylor C. W. clerk
 Taylor Charles, storeman
 Taylor W. Innes, auct. & sec. Rds. Id
 Teesdale Edwd. C. acct
 Thelemann Fred, coach propr
 Thompson Hugh, storeman
 Tindal Frank, junr

TINDAL LEWIS, marine surveyor & com. agt. See advt
 Totaer Miss A. nurse
 Union Bank of Australia Ltd.
 E. W. Roxburgh, loc. mgr
 Von Bertouch —, asst. wharfinger
 Wallarencia Stn. (Kerr Bros. owns)
 Ward Miss
 Ward Miss D
 West Thos. mgr. Nor-West Brewery & Ice Co. Ltd
 Whyte Ronald (Boodarie)
 Willecock W. butcher & storekeeper
 Williams Harry, painter & sign writer
 Wilson & Co. A. H. forwarding agts
 Wilson Arthur H. (W. & Co)
 Woodman L. E. Port Hedland htl
 Woodroffe A. E. V. mgr. A. S. S. Co. Ltd
WOODROFFE H. B. com. & forwarding agt. See advt. Port Hedland
 Port Walcott, see Cossack.
 Preston, see Donnybrook.
 Preston Park, see Donnybrook.
 Princess Aliz, see Murrin Murrin.
PRINCESS ROYAL. Dundas Goldfields. 476 m. fr. Perth. Rail to Coolgardie (sin. 57/5, 35/9; ret. 86/2, 53/9), thence bi-weekly coach (fare 40/-); post, tel. parcels post, m. o. & p. n. offices.
 Bartels Paul, acct
 Cooper John, Princess Royal hotel
 Corry Saml. const
 Crossing & Anderson, butchers
 Deeble D. metallurgist
 Dunn Arthur C. Exchange hotel
 Flanagan R. A. draper
 Foster Edwd. mine mgr
 Hill Arthur D. teacher
 Hill Mrs. Marguerite E
 Kett D. E. storekpr
 Loughrey H. B. postmaster
 McDonald John W. D. storekpr
 Mathews Oliver E. contr
 Meo Jos. engr
 Perkin Geo
 Read Henry J. fruiterer & confr
 Richards Jos. tobacconist & hair-dresser
 Robbie Mrs. Isabel S. Club htl
 Rumble E. W
 Shorten Herbert, amalgamator
 Treloar Wm. mine mgr
 Walters W. contr
 Weickhardt F. W. baker
 Williams Griffith W. draper
 Williams Wm. Thos. engr
 Prospect Valley, see Northam.
 Puntaping, see Wagin.
 Quagah Swamp, see Quindalup.
 Qualen, see York.
 Quarry, for residents see Bulla Bulling.
 Queenesten brook, see Bridgetown.
 Queenswood, see Donnybrook.
 Quell Quelling, see Northam.

QUELLINGTON, Eastern district. 114 m. fr. Perth; rail to York (sin. 11/11, 7/5; ret. 17/11, 11/-), thence 12 m.; receiving office.
 Byrne Patk. farmer
 Carter Jno. farmer
 Cook Albt. farmer
 Cook Arthur T. farmer
 Cook Geo. farmer
 Cook Lewis, farmer
 Cook Mrs. F. farmer
 Crawford Saml. farmer
 Endersby Chas. farmer
 Endersby Jas. farmer
 Endersby Jno. farmer
 Endersby Wm. farmer
 Gentle Saml. farmer
 Gentle S. F. S. mail receiver
 Gentle Wm. farmer
 Hitchcock L. farmer
 Hill Fredk. farmer
 Hill Jno. farmer.
 Hill Jos. farmer
 Hitchcock Geo. farmer
 Hitchcock Wm. farmer
 Lako G. H. teacher
 Martan Edwd. farmer
 Martin Hry. farmer
 Martin Percy, farmer
 Mead Thos. farmer
 Morrell Sidney, junr. farmer
 Peacock Fredk. junr. farmer
 Peacock Jas. farmer
 Quilkarikon, see York.
 Quiline, see York.
QUINDALUP. Sussex dist. 163 m. S. fr. Perth; rail to Busselton (sin. 24/-, 14/11; ret. 36/-, 22/5), thence 14 m. by coach, fare, ret. 10/-; post, p. o., postal note & tel. offices. Agric. dist.
 Abbey Nathaniel, farmer
 Adams Harry A. farmer
 Anderson A. B. farmer
 Armstrong James W. farmer
 Bunbury Arch. R. farmer
 Carter Brothers, farmers
 Carter Harold (C Brothers)
 Carter Percy (C Brothers)
 Carter Sydney, farmer
 Curtis Wm. jun
 Forrest James, farmer
 Gustafson August E. farmer
 Hall Geo. farmer
 Harris Andrew, farmer
 Harris Ebenezer J. farmer
 Harris Geo. farmer
 Harris John, farmer
 Harwood John, farmer
 Harwood William, farmer
 Hobbs Albt. farmer
 Keenan Stewart, farmer
 Kinsella James, farmer
 Lane Jno. farmer
 Lowe Jas
 McDonald Wm
 McGregor Gavin F. farmer
 McGregor Wallace
 McWhenny Jno
 Mann F. Dunnsborough
 Mewitt Alf. farmer
 Murry K. C. farmer
 O'Donnell James, farmer
 O'Donnell Michl

Esplanade Hotel, ARTHUR L. O'CONNOR, Proprietor.

- Spacious
- Cool
- Balconies
- Roof
- Promenade



- Plunge and Shower
- Baths
- Billiard and Commercial Rooms

THIS FINE STONE-BUILT TWO-STORIED HOUSE is the BEST APPOINTED and COOLEST HOTEL on the NOR.-WEST COAST, and is finely situated overlooking the harbour. VISITORS can rely on receiving every COMFORT and ATTENTION.

Vehicles meet all Boats.

Letters and Telegrams receive prompt attention.

L. TINDAL,

.. PORT HEDLAND, ..

Marine Surveyor, Customs, Forwarding & Commission Agent.

AGENT FOR—
 The Commercial Union Assurance Co. Ltd.; The Adelaide Compressed Fodder Co. Ltd., S.A., &c., &c.

CONSIGNMENTS OF ORE, WOOL, &c., forwarded to any part of the UNITED KINGDOM.

GOODS FORWARDED WITH THE UTMOST DESPATCH. AGENCIES ACCEPTED.

— All communications receive prompt attention. —

The Port Hedland Hotel,

... L. E. WOODMAN, Proprietor, ...

(LATE OF TOLLEY & CO. LTD., FREMANTLE.)

Extensive alterations having been completed THE PORT HEDLAND HOTEL will be found replete with every modern comfort for the convenience of Travellers.

Commercial Travellers' Association House.

GOOD STABLING.
 All communications receive prompt attention.