

Telegraphic Address: "NASMYTH, PATRICROFT."

Nat. Telephone No. 5 (Ecclos).

# NASMYTH, WILSON & CO., LTD.,

Locomotive, Hydraulic and General Engineers,  
BRIDGEWATER FOUNDRY,

London Office:  
5, Dowgate Hill, Cannon St., E.C.

PATRICROFT, near MANCHESTER.

**LOCOMOTIVES FOR MAIN LINE** and other purposes,  
for Great Britain, the Colonies and Abroad.

**LOCOMOTIVE BOILERS, TENDERS AND DUPLICATE PARTS.**

**HYDRAULIC BALING, PACKING AND FINISHING PRESSES** for  
Wool, Cotton, Jute and other Fibre.

Patent Horizontal Direct-Acting Pumping Engines for Baling, Packing, Finishing and other Presses.  
Special Multiple-throw Independent Pumps, suitable for being belt- or gear-driven.  
Hydraulic Intensifiers and Accumulators, Deep Well and all classes of Pumping Plant.

MAKERS AND ORIGINAL INVENTORS OF **STEAM HAMMERS**, of all sizes, from  $\frac{1}{2}$  cwt. to 40 Tons. Single or Double Acting, with or without Self-Acting Motion.

**Patent Steam Pile Drivers.**

**BLOWING ENGINES, WINDING ENGINES, AIR COMPRESSORS.**

Gold and Silver Medal and 1st Class Certificate of Merit, Calcutta, 1883-4.

Melbourne Exhibitions, 1881 & 1889, Gold Medals Gained by

## W. TYZACK, SONS & TURNER,

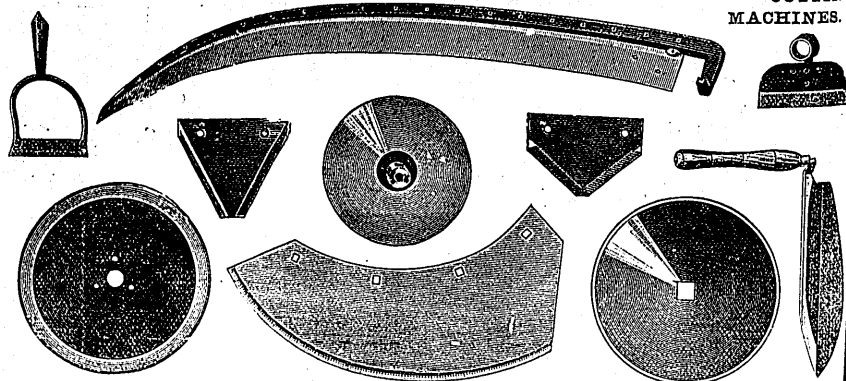
LITTLE LONDON WORKS, SHEFFIELD.

IMPROVED RIVETED  
AND CROWN SCYTHES,  
HAY KNIVES AND  
REAPING HOOKS.



KNIVES FOR  
REAPING, MOWING,  
CHAFF & TURNIP

CUTTING  
MACHINES.



**BEST CAST STEEL FILES.**  
MACHINE-GROUND CIRCULAR AND OTHER SAWS.

## JOSEPH BAKER & SONS, LTD.,

Engineering Works, Willesden Junction, London, England,  
And at 441, Kent Street, SYDNEY, N.S.W.  
— AWARDED 39 GRAND PRIX AND GOLD MEDALS. —

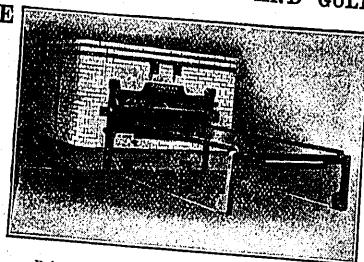
BREAD and CAKE

MACHINERY

AND  
OVENS.

BISCUIT

MACHINERY and  
OVENS.



Baker's New Patent Flush Front Draw-Plate  
Continuous Baking Oven.

— Catalogues, in sections for different Trades, post free on application. —

CHOCOLATE,  
COCOA and  
CONFECTIONERY  
MACHINERY.

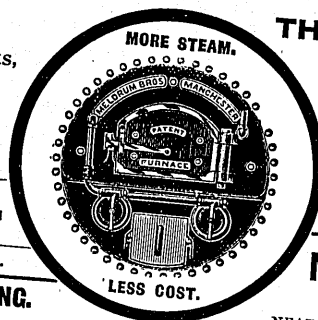
GRINDING,  
SIFTING and  
MIXING  
MACHINERY.

FOR  
Gold Mines,  
Electric Works,  
Gasworks,  
Breweries,  
Flour Mills,  
&c., &c.

As used by  
GREAT BOULDER MAIN  
REEF, &c., Mines.

Write for Catalogue.

13,000 WORKING.



THE "MELDRUM"  
FURNACE FOR ALL  
NEW and OLD BOILERS.

ALSO DESTRUCTORS FOR TOWNS' REFUSE,  
AS WORKING AT  
Christchurch, Auckland, Toowoomba and Annandale, &c.

**MELDRUM BROS. LTD.,**  
TIMPERLEY,  
NEAR MANCHESTER

## The VALLONGO SLATE & MARBLE QUARRIES CO., LIMITED.

EXPORTERS OF  
SLATE SLABS AND ROOFING SLATES,  
ALSO TANKS AND COOLERS, FOR BREWERS, &c.

Five Medals Awarded at Paris, 1867; Vienna, 1873; Philadelphia, 1876; Adelaide, 1887; Lisbon, 1888;  
Gothenburg, 1891, and Paris, 1900.

Prices and Full Particulars on application to the Offices of the Company,

165, QUEEN VICTORIA STREET, LONDON, E.C.