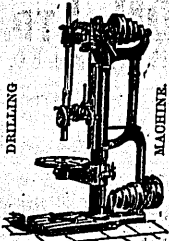
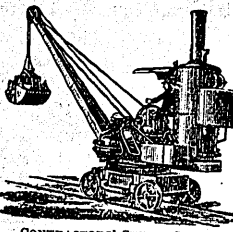


SPECIALITIES.
STEAM ENGINES & BOILERS.
PUMPS & PUMPING ENGINES.
CRANES, Steam or Hand Power, for all purposes.
 The "CLUTHA" WINDMILL, the best and cheapest power for grinding feed, churning, pumping water, sawing wood, &c., &c.
ENGINEERS' MACHINE TOOLS.
 New Designs with latest improvements.



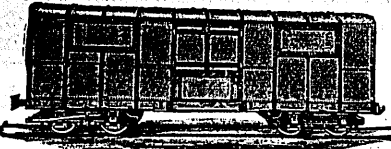
DRILLING MACHINE



CONTRACTORS' STEAM CRANE.

P. & W. MACLELLAN, LTD.,
CLUTHA WORKS, GLASGOW.

RAILWAY WAGON BUILDERS.
BOLT AND NUT MANUFACTURERS.



IRON AND STEEL BRIDGE BUILDERS.
IRON ROOF MANUFACTURERS.

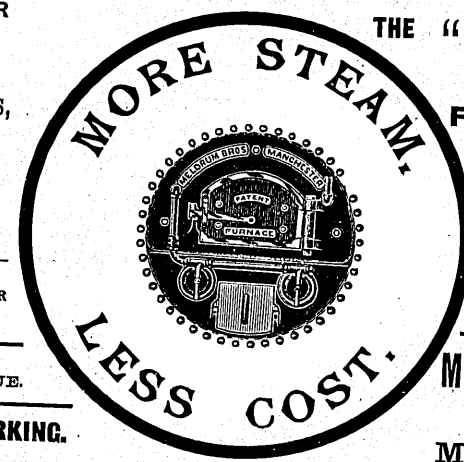
Complete Railway Plant Contractors.
 Chief Office and Warehouse: 129, Trongate, GLASGOW.
 Registered Office: 8, GREAT WINCHESTER STREET, E.C., LONDON.
 Registered Cable Address: "MACLELLAN, GLASGOW."
 Registered Cable Address: "MACLELLAN, LONDON."

FOR
 Gold Mines,
 Electric Works,
 Gasworks,
 Breweries,
 Flour Mills,
 &c., &c.

As used by
 GREAT BOULDER
 MAIN REEF, &c.,
 Mines.

WRITE FOR
 CATALOGUE.

12,000 WORKING.



THE "MELDRUM"

FURNACE FOR ALL
NEW & OLD BOILERS.

THE QUICKEST AND MOST
 ECONOMICAL STEAM RAISER
 IN THE WORLD.

ALSO MECHANICAL STOKERS
 AND REFUSE DESTRUCTORS.

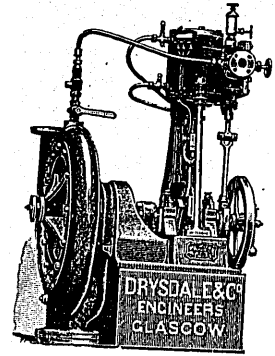
MELDRUM BROS. LTD.
 TIMPERLEY,
 MANCHESTER.

Please quote this book in all enquiries.

DRYSDALE & CO.,

Bon-Accord Engine Works, London Road, GLASGOW.

ESTABLISHED 1868. Cable Address: "BONACCORD, GLASGOW."
 Codes: A B C, 5th Edition; "Leiber's"; and "Engineering Telegraph."



CENTRIFUGAL PUMPS & ENGINES,

MADE SINGLE OR DOUBLE,
 For DOCKS, CIRCULATING PURPOSES, SALVAGE WORK, SAND PUMPING, &c.
 The Cheapest and most efficient Pump in the Market.
 From Newest and most improved Patterns.
SPECIALITIES: Centrifugal Pumps, Fan Engines and High-Speed Engines,
 Hydraulic Presses and Pumps, Hydraulic Cranes, Accumulators, Hydraulic
 Riveters, Lifts of all kinds.

FANS & ENGINES
 FOR FORCED DRAUGHT IN BOILER FURNACES & FOR VENTILATING.
 MADE FOR ANY QUANTITY AND POSITION.

HIGH-SPEED ENGINES,

DRIVING DIRECT AT SLOW SPEED.
 Agents: J. WILDRIDGE & SINCLAIR, Vickers's Chambers, 82, Pitt Street, SYDNEY, and
 A. M. P. Buildings, BRISBANE; and SPLATT, WALL & CO., corner of Hay and Pier
 Streets, PERTH.

GLENFIELD & KENNEDY, LIMITED,

KILMARNOCK, SCOTLAND,
 Hydraulic and Sanitary Engineers.

Makers of SLUICE VALVES, HYDRANTS, FOUNTAINS, TAPS, WATER METERS,
 AND ALL
Waterworks and Fire-Extinguishing Appliances;
 ALSO HYDRAULIC AND PUMPING MACHINERY.



Rheinisch-Westfälische Sprengstoff

Action-Gesellschaft,

KÖLN-AM-RHEIN.

(Rhenish-Westphalian Explosives Co. Lim.)
 COLOGNE-O-RHINE.)



Works at Troisdorf, Nürnberg and Rösahl.

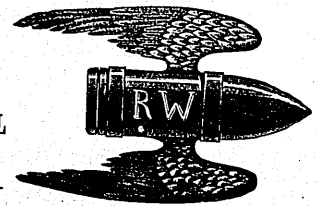
SPECIALITIES (of own Manufacture):—
 SMOKELESS POWDER, GUN COTTON, METAL CARTRIDGES, CAPS FOR CARTRIDGE SHELLS,
 BREECH CAPS (Flobert's System), PERCUSSION CAPS, ELECTRIC CAPS, DETONATORS
 and DYNAMITE.

AUTOMATIC MEASURE TESTING MACHINES.
 SPECIAL MACHINES for the PREPARATION OF METAL CAPS AND BULLETS.

Over 1,400 workmen are
 employed at our works.

CONTRACTORS TO SEVERAL

Telegraphic Address—



Correspondence in German,
 French and English.

GOVERNMENTS.

"DYNASPRENG."