

ASKHAM BROS. & WILSON LD.

SPECIAL TOOL STEEL for all purposes.

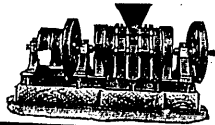
SPECIAL TOUGH "STAG" MINERS' DRILL STEEL.

"Engineering Telegraph Code."

CRUCIBLE STEEL CASTINGS.

The A B C Code, 4th Edition.

Stone Breakers,
Elevators, Conveyors,
Tanks, &c.



Grinding and Separating
Machinery.

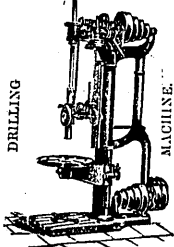
SHEFFIELD, ENGLAND.

SPECIALITIES.

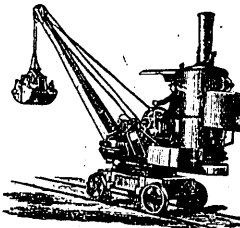
STEAM ENGINES & BOILERS.
PUMPS & PUMPING ENGINES.
CRANES, Steam or Hand Power, for all purposes.

The "CLUTHA" WINDMILL, the best and cheapest power for grinding feed, churning, pumping water, sawing wood, &c., &c.

ENGINEERS' MACHINE TOOLS.
New Designs with latest improvements.



DRILLING MACHINE.



CONTRACTORS' STEAM CRANE.

P. & W. MACLELLAN, LTD.,

CLUTHA WORKS, GLASGOW.

RAILWAY
WAGON BUILDERS.
BOLT AND NUT
MANUFACTURERS.



IRON AND STEEL
BRIDGE BUILDERS.
IRON ROOF
MANUFACTURERS.

Complete Railway Plant Contractors.

Chief Office and Warehouse:

129, Trongate, GLASGOW.

Registered Cable Address: "MACLELLAN, GLASGOW."

Registered Office:

8, GREAT WINCHESTER STREET, E.C., LONDON.

Registered Cable Address: "MACLELLAN, LONDON."

DRYSDALE & CO.,

Bon-Accord Engine Works, London Road, GLASGOW.

ESTABLISHED 1863. Cable Address: "BONACCORD, GLASGOW."

CENTRIFUGAL PUMPS & ENGINES,

MADE SINGLE OR DOUBLE,

FOR DOCKS, CIRCULATING PURPOSES, SALVAGE WORK, SAND PUMPING, &c.
The Cheapest and most efficient Pump in the Market.
From Newest and most improved Patterns.

SPECIALITIES: Centrifugal Pumps, Fan Engines and High-Speed Engines, Hydraulic Presses and Pumps, Hydraulic Cranes, Accumulators, Hydraulic Riveters, Lifts of all kinds.

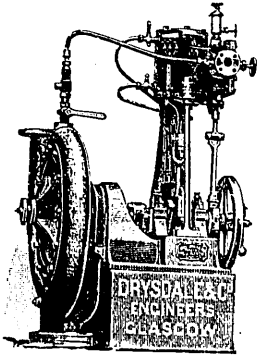
FANS & ENGINES

FOR FORCED DRAUGHT IN BOILER FURNACES & FOR VENTILATING.
MADE FOR ANY QUANTITY AND POSITION.

HIGH-SPEED ENGINES.

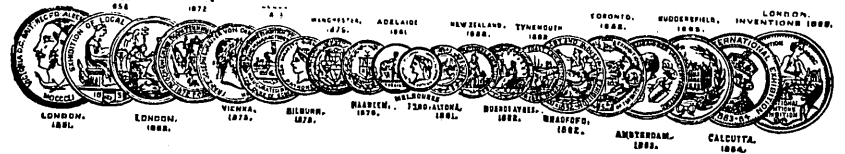
DRIVING DIRECT AT SLOW SPEED.

Agents: J. WILDRIDGE & SINCLAIR, Alliance Chambers, 97, Pitt Street, SYDNEY, and A. M. P. Buildings, BRISBANE.



KIRKSTALL FORGE CO.,

LEEDS, ENGLAND.



S. E. View of Kirkstall Forge 3 1/2 Miles W. of Leeds
with the Forge in the Distance
FOUNDED ANNO DOMINI 1152.

SPECIALITIES:

PATENT ROLLED SHAFTING.

No turning required. 20% stronger in Torsion, 33% in Flexion.

BRIGHT COMPRESSED SHAFTING.

Perfect job, made to $\frac{1}{1000}$ of an inch.

CART AND CARRIAGE AXLES

Of all descriptions.

Largest and Best Makers in the World.