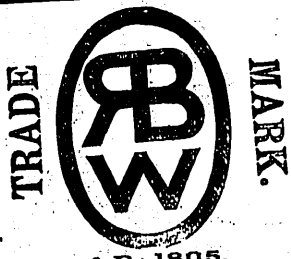


RYLANDS BROTHERS, LIMITED, WARRINGTON, MANUFACTURERS OF ALL KINDS OF IRON & STEEL WIRE.

Specialties
Specially Prepared Tinned Steel
Mattress Wire for Mattress
Makers.
Coppered Steel Spring Wire for
Spring Makers, &c.
Special Wire for Rivet Making.



Barbed Fencing Wire.
Fencing and Signal Strand.
Best Telegraph and Telephone
Wire.
Wire Ropes, all qualities, for
Mines, Ships, &c.

A.D. 1805.

GALVANIZED WIRE NETTING, Accurate Mesh, Gauge, Width,
Length and Standard Weights guaranteed.

COPPERED SPRINGS, full Height and Gauge guaranteed, for Upholsterers, &c.

SASH CORD, PICTURE CORDS, CLOTHES LINES, &c.

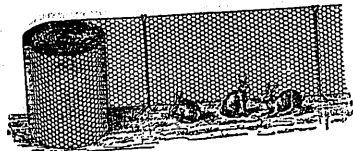
BARNARD, BISHOP & BARNARDS, Ld.

Inventors and Original Manufacturers of

GALVANIZED WIRE NETTING

In ALL MESHES and GAUGES, from 3 in. to 4 in.,
and suitable for all purposes.

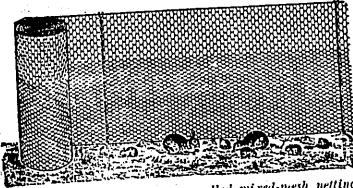
Oldest and Largest Makers in the World.



SPECIALITY—
PATENT MACHINE-MADE

MIXED-MESH NETTING,

Consisting of 1 1/4 in. mesh below and 2 1/4 in. above, thus
providing an absolutely safe Rabbit Fence at 20 per
cent. below the cost of 1 1/4 inch throughout.



Do not be misled into buying so-called mixed-mesh netting with intermediate strands, which is in reality but two ordinary widths
laced together by hand, while ours is woven in one unbroken width throughout.

At the suggestion of several clients we have laid down Machinery for the
manufacture of a

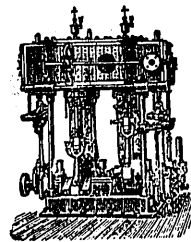
NEW VARIETY (as illustrated),

Consisting of 1 1/4 inch below and a special form of 1 1/4 inch above, and this com-
bination exactly fulfils the conditions of the Bill dealing with the rabbit pest
as introduced into the New South Wales Legislature by the Hon. Carruthers.

Although this combination is not so economical as our original one men-
tioned above, yet it effects a saving of 7 1/2 to 10 per cent. over 1 1/4 inch
throughout.

We being the Sole Makers of this Patent Netting,
Indentors should specify "BARNARD'S NETTING."
INQUIRIES INVITED. ESTIMATES AND SAMPLES FREE.

Norfolk Iron Works, NORWICH, England.

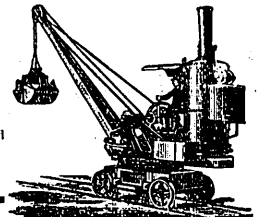


MARINE ENGINE.

SPECIALITIES.
STEAM ENGINES & BOILERS.
PUMPS & PUMPING ENGINES.
CRANES, Steam or Hand Power, for
all purposes.

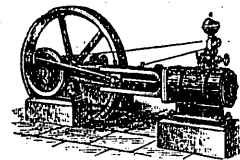
The "CLUTHA" WINDMILL, the best and
cheapest power for grinding feed, shelling corn,
pumping water, sawing wood, &c., &c.

ENGINEERS' MACHINE TOOLS.
New Designs with latest improvements.

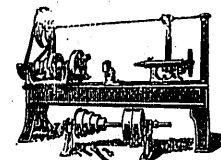


CONTRACTORS' STEAM CRANE.

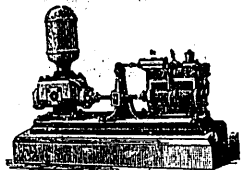
P. & W. MACLELLAN, LTD., CLUTHA WORKS, GLASGOW.



HORIZONTAL ENGINE.



LATHES.



DIRECT-ACTING STEAM PUMP.

Chief Office and Warehouse:
129, Trongate, GLASGOW.

Registered Cable Address: "MACLELLAN, GLASGOW."

Registered Office:
8, GREAT WINCHESTER STREET, E.C.,
LONDON.

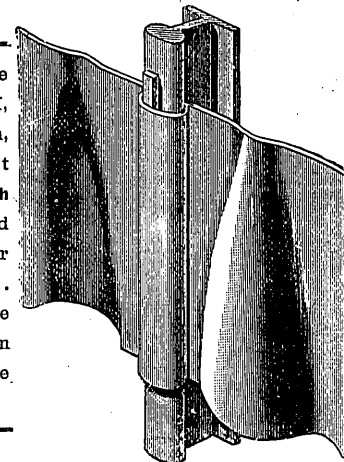
Registered Cable Address: "MACLELLAN, LONDON."

G. B. SMITH & Co., CRAIGHALL IRON WORKS, GLASGOW,

MAKERS OF EVERY KIND OF

Iron and Wire Fencing, Railings, Gates; Iron Roofs and Buildings for Railway, Mining and
Agricultural Purposes; Iron Fencing Materials for Railways, Water Works,
Public Parks, Asylums, &c.

Standards for Wire
Fencing of Bulb T, H,
Channel or Angle Section,
fitted with our Patent
Corrugated Steel Earth
Plate, which is slipped
on to the Standard after
it has been driven.
These Earth Plates have
greater holding power than
any movable Earth Plate
yet known.



Winding Pillars, to
strain 220 yards each
way, fitted with port-
able Wrought-Iron Bases,
for Export. Intermediate
Pillars, with bases as
above. Stays, Stan-
dards, Wire Netting for
Sheep, Rabbits, &c. Barb
and Fencing Wire of
all kinds, Fencing
Tools, &c.

Illustrated Catalogues and Lists, Prices and all information on Application.

Telegraphic Address: "WIRE," GLASGOW.