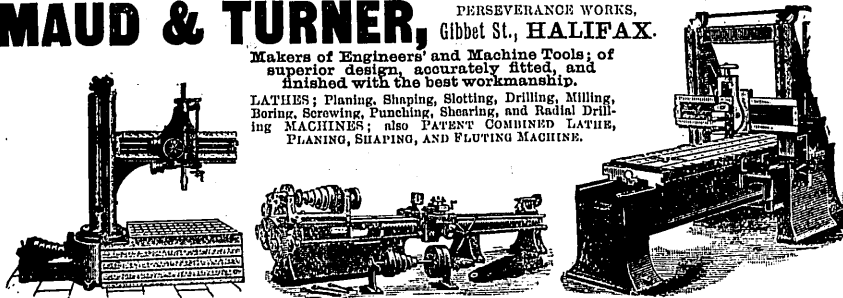


MAUD & TURNER, PERSEVERANCE WORKS, Gibbet St., HALIFAX.

Makers of Engineers' and Machine Tools; of superior design, accurately fitted, and finished with the best workmanship.

LATHES; Planing, Shaping, Slotting, Drilling, Milling, Boring, Screwing, Punching, Shearing, and Radial Drilling MACHINES; also PATENT COMBINED LATHE, PLANING, SHAPING, AND FLUTING MACHINE.



100 MACHINE TOOLS FINISHED AND IN PROGRESS. BEST WORKMANSHIP GUARANTEED.

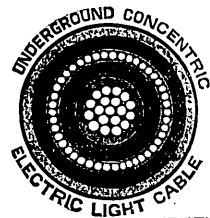
W. T. GLOVER & CO., SALFORD, MANCHESTER (ENGLAND). LONDON: 39, VICTORIA STREET, S.W.

Manufacturers of every description of TELEGRAPHIC, TELEPHONIC & ELECTRIC LIGHT WIRE & CABLE. CONTRACTORS to the NATIONAL TELEPHONE CO. and the GOVERNMENT DEPARTMENTS.

Patentees and Sole Manufacturers



OF SOLID-ENDED ARMATURE BARS.



REOSTENE AND MANGANIN HIGH RESISTANCE METALS.

MAKERS OF ALL KINDS OF VULCANISED ELECTRIC LIGHT WIRE AND CABLE ALSO;

Lead Covered Cables for Town Lighting, &c. Poole's & Trotter's PATENT WIRE GAUGES.

AGENTS IN AUSTRALIA—E. W. PEARSON, 18, The Exchange Vestibule, MELBOURNE; And A. F. WILLIAMSON, 159, Hay St., PERTH, W.A.



THE COMBINATION

Western Australia Post Office Directory.

... THE ONLY COMPLETE DIRECTORY OF THE COLONY PUBLISHED.

HAS A LARGE CIRCULATION THROUGHOUT THE GOLDFIELDS, AND IS TO BE FOUND EVERYWHERE.

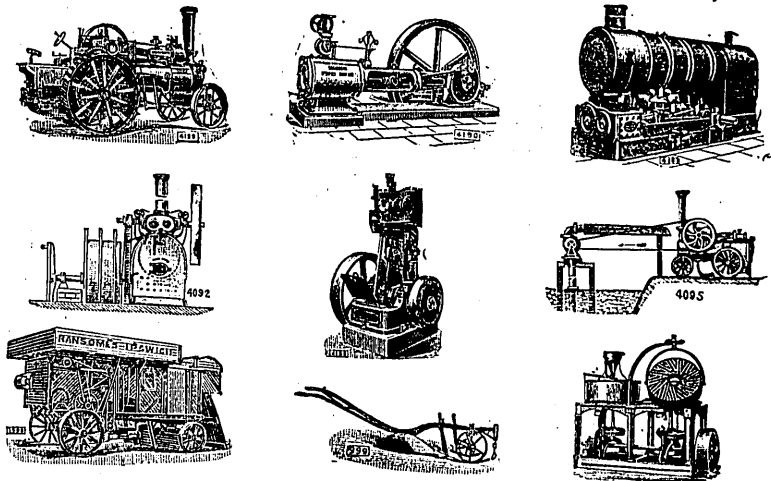
FULL LISTS OF MERCHANTS, STOREKEEPERS, DRAPERS, HOTELS, MINING COMPANIES, SHAREBROKERS, MINING AGENTS, SURVEYORS, &c., &c.

➤ **H. Wise & Co., Publishers,** ◀

EAGLE CHAMBERS, HAY STREET, PERTH; 49 Elizabeth Street, MELBOURNE (Head Office); and at ADELAIDE, SYDNEY, BRISBANE, HOBART and DUNEDIN, N.Z.

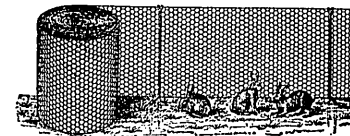


RANSOMES, SIMS & JEFFERIES, L^D



Orwell Works, IPSWICH, & 9, Gracechurch Street, LONDON.

BARNARD, BISHOP & BARNARDS, Ld.

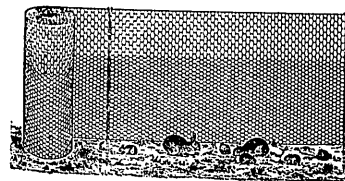
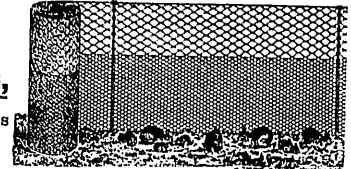


— Inventors and Original Manufacturers of —
GALVANIZED WIRE NETTING
In ALL MESHES and GAUGES, from 1/2 in. to 4 in., and suitable for all purposes.

Oldest & Largest Makers in the World.

SPECIALITY—
PATENT MACHINE-MADE MIXED-MESH NETTING,

Consisting of 1 1/2 in. mesh below and 2 1/2 in. above, thus providing an absolutely safe Rabbit Fence at 20 per cent. below the cost of 1 1/2 inch throughout.



At the suggestion of several clients we are laying down Machinery for the manufacture of a

NEW VARIETY.

Consisting of 1 1/2 in. below and a special form of 1 1/2 in. above, and shall be ready to execute orders in March, 1897.

Although this combination is not as economical as our original one mentioned above, yet it effects a saving of 7 1/2 to 10 per cent. over 1 1/2 in. throughout.

We being the Sole Makers of this Patent Netting, Importers should specify "BARNARD'S NETTING."

INQUIRIES INVITED.

ESTIMATES & SAMPLES FREE.

Norfolk Iron Works, NORWICH, England.