

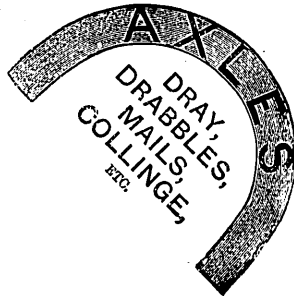
KIRKSTALL FORGE CO., LEEDS, ENGLAND.



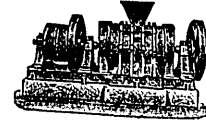
ADLAIDE, 1886.
MELBOURNE, 1888.



A VIEW OF KIRKSTALL ABBEY 3/4 MILES W. OF LEEDS.
WITH THE FORGE IN THE MIDDLE.
FOUNDED ANNO DOMINI, 1152.

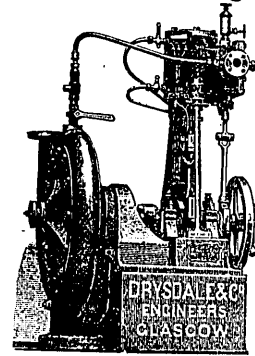


ASKHAM BROS. & WILSON Ld.
SPECIAL TOOL STEEL for all purposes.
SPECIAL TOUGH "STAG" MINERS' DRILL STEEL.
"Engineering Telegraph Code." **CRUCIBLE STEEL CASTINGS.** The A B C Code, 4th Edition.
GRINDING and SEPARATING MACHINERY.
Stone Breakers, Elevators, Conveyors. SHEFFIELD, ENGLAND.



DRYSDALE & CO.,
Bon-Accord Engine Works, London Road, GLASGOW.

ESTABLISHED 1868. Telegraphic Address: "BON-ACCORD, GLASGOW."



CENTRIFUGAL PUMPS & ENGINES,
MADE SINGLE OR DOUBLE.

For DOCKS, CIRCULATING PURPOSES, SALVAGE WORK, SAND PUMPING, &c.
The Cheapest and most efficient Pump in the Market. From Newest and most Improved Patterns.

SPECIALITIES: Centrifugal Pumps, Fan Engines and High-Speed Engines, Hydraulic Presses and Pumps, Hydraulic Cranes, Accumulators, Hydraulic Riveters, Lifts of all kinds.

FANS & ENGINES

FOR FORCED DRAUGHT IN BOILER FURNACES & FOR VENTILATING.
MADE FOR ANY QUANTITY AND POSITION.

HIGH-SPEED ENGINES,
DRIVING DIRECT AT SLOW SPEED. (11)

LOCOMOTIVE TANK ENGINES

OF ALL DESCRIPTIONS AND ANY SIZE MANUFACTURED BY

THE HUNSLET ENGINE COMPANY,
HUNSLET ENGINE WORKS, LEEDS, ENGLAND.

For Light Railways, Ironworks, Collieries, Contractors, Manufactories, Docks, &c., &c.

Specially designed for any circumstances; or to suit any Gauge of Railway.

ILLUSTRATED CATALOGUE ON APPLICATION.

Telegram Address: "ENGINE, LEEDS."